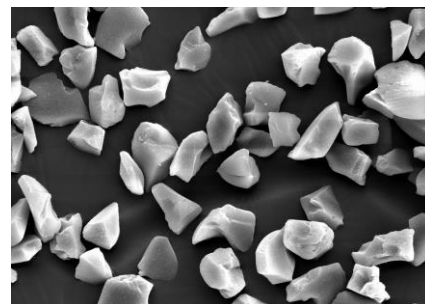


## ZEOprep® 60 C8 / 40-63 µm Technical Data Sheet

ZEOprep® irregular Silica is one of the most widely used chromatography sorbents worldwide. Used as industrial column packing material for general purification of natural products, food, cosmetics as well as in pre-purification of pharmaceutical and nutraceutical ingredients. Bonded phases are preferable used in liquid chromatography, flash chromatography and solid phase extraction.

ZEOprep® Silica is produced under strict QC controls from raw material to finished product ensure high lot-to-lot reproducibility and tightly controlled specifications.

ZEOprep® Silica's are available in multi tons quantities with a wide variety of packing sizes to meet individual applications and economic requirements.



### Typical Properties

Pos.	Method	Parameter/con. of meas.	Unit	Specification
010.01	SPZ-016	Under size, air jet sieve Alpine 40 µm	% w/w	≤ 10.0
010.02	SPZ-016	Over size, air jet sieve Alpine 63 µm	% w/w	≤ 10.0
020.01	SPZ-501	w(C), carbon content	% w/w	≥ 9.0
030.01	SPZ-012	Pore volume, N <sub>2</sub> isotherm	mL/g	0.70 - 0.85
030.02	SPZ-012	Surface specific, N <sub>2</sub> isotherm, sBET	m <sup>2</sup> /g	470 - 530
030.03	SPZ-012	Pore size calculated, N <sub>2</sub> isotherm	nm	5.2 - 7.3
040.01	SPZ-502	tR(Phenol)/tR(Pyridin)	-	≥ 1.0

### Additional Information

Storage	ZEOprep® Silica's can be stored in original, sealed packaging for at least 5 years after date of release. Seal tightly after each use.
Packaging Size	1kg PE bottle 25 kg Plastic drum
Safety	In accordance with Regulation (EC) No. 1272/2008 (GHS/CLP) and Directive 1999/45/EC, the product does not need to be classified nor labelled.
CAS-Nr.	7631-86-9
EINECS-Nr.	231-545-4
REACH-Nr.	01-2119379499-16-0036
Customs Tariff:	2811.22