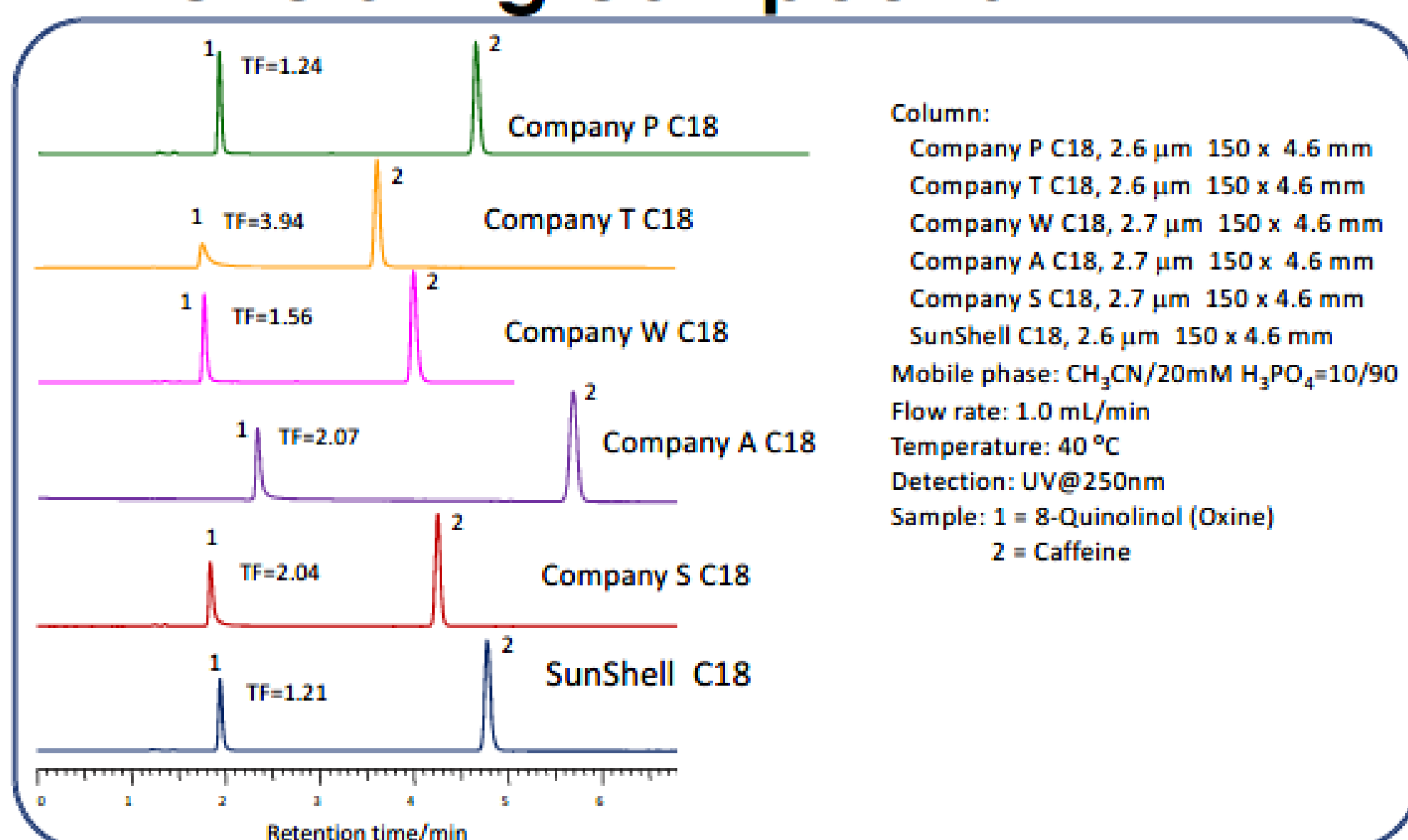


## Comparison of oxine, metal chelating compound



8-quinolinol, a Oxine peak shape (peak number 1) was compared with other columns. The amount of metal impurities in the core shell silica was evaluated because oxine is a metal chelating compound and the metal impurity causes oxine to peak tail. SunShell C18 had the best peak shape with the least amount of tailing compared to the other columns in the analysis.