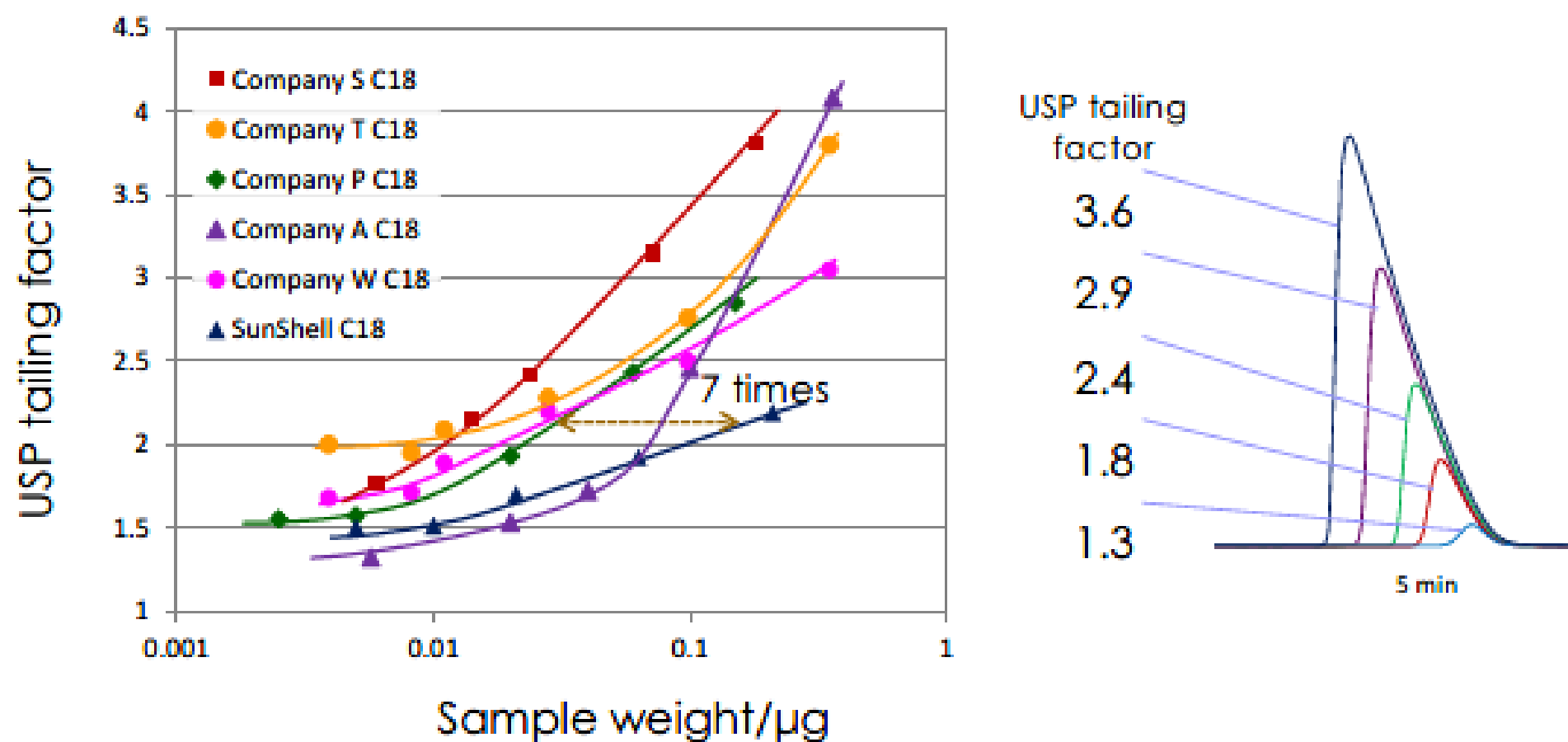


Loading capacity of amitriptyline III

Mobile phase: Acetonitrile/0.1% formic acid=(30:70)

Column dimension: 150 x 4.6 mm, Flow rate: 1.0 mL/min, Temp.: 40°C



In the case of using acetonitrile /0.1% formic acid as a mobile phase, amitriptyline peak shows more tailing because a loading capacity decreases in an acidic, low-ionic-strength mobile phase.

This slide shows loading capacity of amitriptyline with less than 0.1% formic acid mobile phase condition. In this acidic condition, loading capacity is very low. Overloading causes peak tailing. SunShell C18 has 7 times more loading capacity than Company P.