

o-, m-, p-メチル馬尿酸の分離

o-, m-, p-Methylhippuric acid

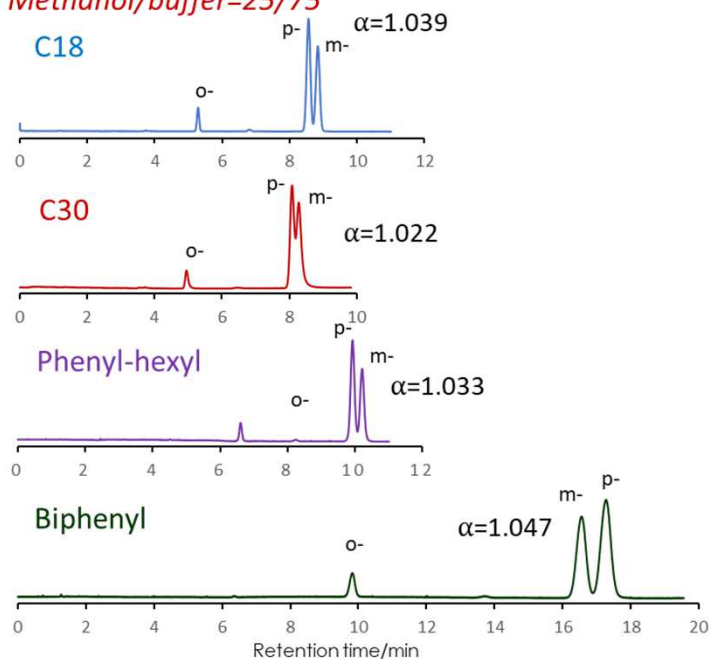
SunShell C18 2.6 μ m, 150 x 4.6 mm i.d.

SunShell C30 2.6 μ m, 150 x 2.1 mm i.d.

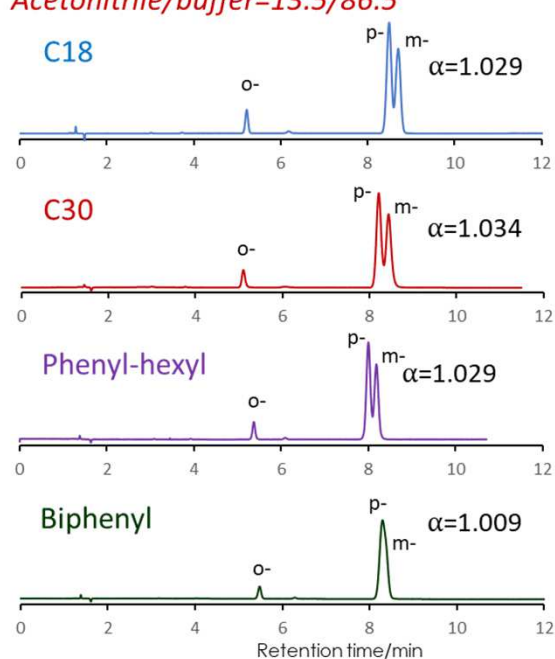
SunShell Phneyl 2.6 μ m, 150 x 4.6 mm i.d.

SunShell Biphenyl 2.6 μ m, 150 x 4.6 mm i.d.

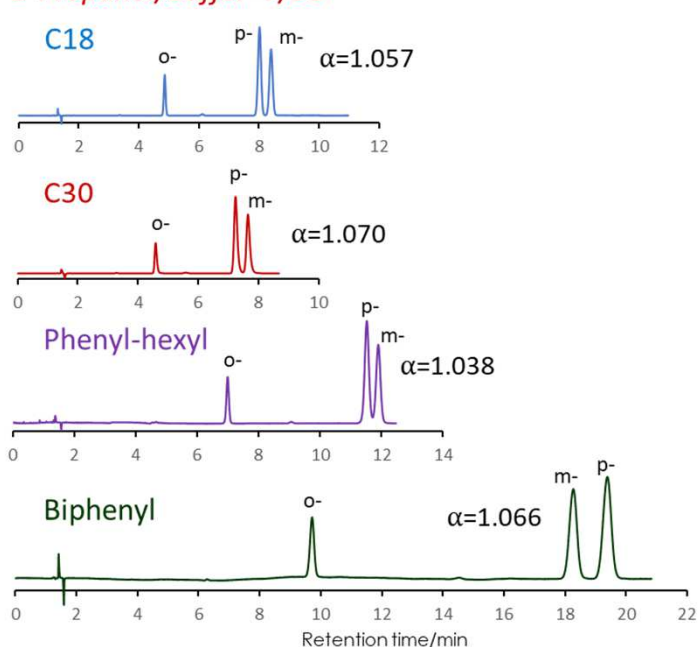
Methanol/buffer=25/75



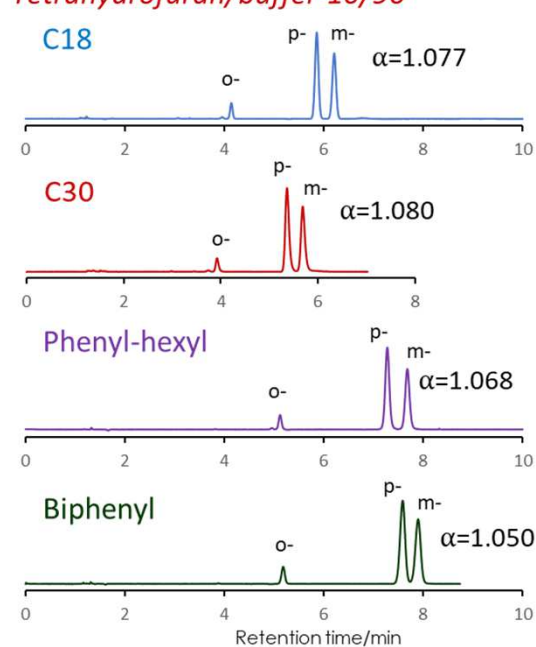
Acetonitrile/buffer=13.5/86.5



2-Propanol/buffer=7/93



Tetrahydrofuran/buffer=10/90



Column: SunShell C18 2.6 μ m 150 x 4.6 mm
 SunShell C30 2.6 μ m 150 x 2.1 mm
 SunShell Phenyl 2.6 μ m 150 x 4.6 mm
 SunShell Biphenyl 2.6 μ m 150 x 4.6 mm

Mobile phase: Organic solvent/25 mM phosphate buffer pH3.0
 Flow rate: 1.0 mL/min, 0.2 mL/min for only C30

Temperature: 40 $^{\circ}$ C
 Detection: UV@230 nm
 Sample: o-, m-, p-methylhippuric acid

