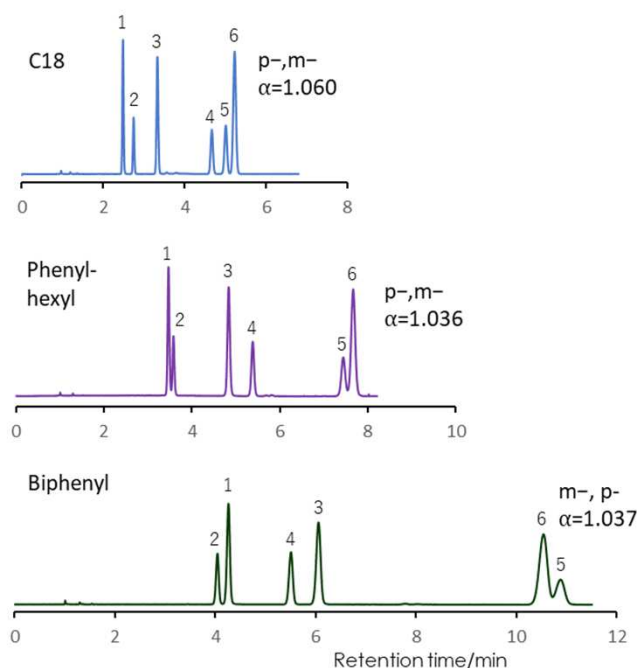


馬尿酸類の分離 (イオンペアー試薬) (2)

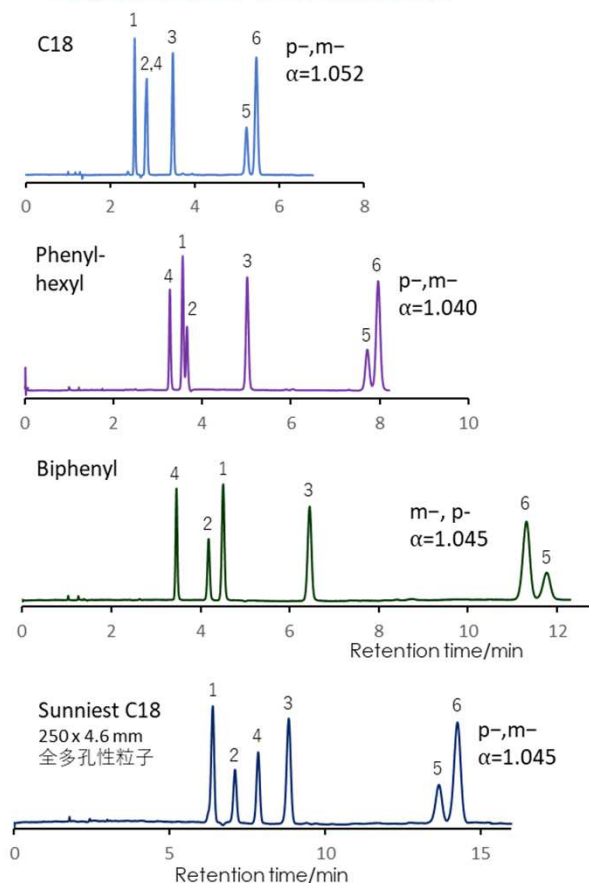
SunShell C18 2.6 μ m, 150 x 4.6 mm i.d.
 SunShell Phenyl 2.6 μ m, 150 x 4.6 mm i.d.
 SunShell Biphenyl 2.6 μ m, 150 x 4.6 mm i.d.
 Sunniest C18 5 μ m, 250 x 4.6 mm i.d.

Hippuric acid (2)

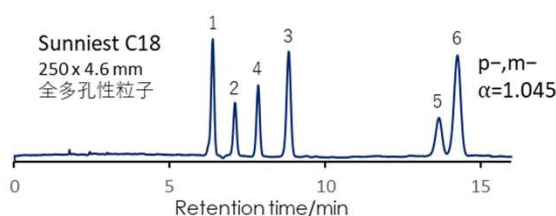
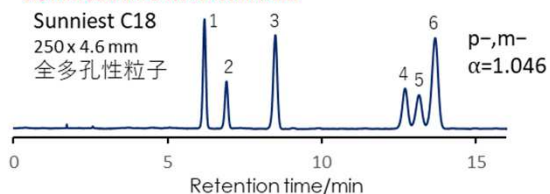
2 mM Sodium 1-Nonanesulfonate



2 mM Sodium 1-Octanesulfonate



0.5 mM Sodium 1-Nonanesulfonate



Column: SunShell C18 2.6 μ m 150 x 4.6 mm
 SunShell Phenyl 2.6 μ m 150 x 4.6 mm
 SunShell Biphenyl 2.6 μ m 150 x 4.6 mm
 Sunniest C18 5 μ m 250 x 4.6 mm

Mobile phase: 2-Propanol:10 mM KH₂PO₄, 2 mM Sodium 1-Nonanesulfonate (pH2.5; H₃PO₄)=10:90
 2-Propanol:10 mM KH₂PO₄, 2 mM Sodium 1-Octanesulfonate (pH2.5; H₃PO₄)=10:90

Flow rate: 1.0 mL/min

Temperature: 40 °C

Detection: UV@210 nm

Sample: 1=, Hippuric acid

2=Mandelic acid,

3= o-Methylhippuric acid

4= Creatinine,

5=p-Methylhippuric acid,

6=m-Methylhippuric acid

