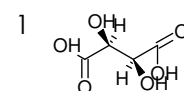
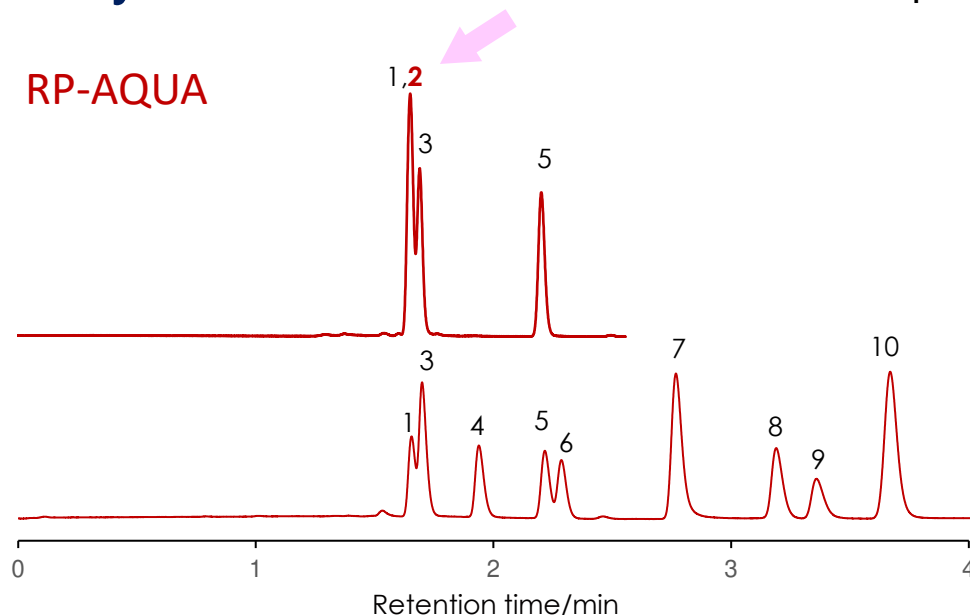


グリコール酸の分離

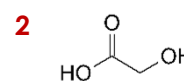
Glycolic acid

SunShell RP-AQUA 2.6 μm, 150 x 4.6 mm i.d.

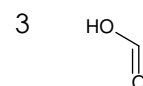
SunShell Biphenyl 2.6 μm, 150 x 4.6 mm i.d.



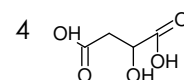
Tartaric acid



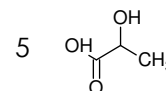
Glycolic acid



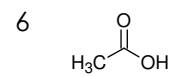
Formic acid



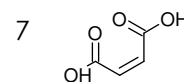
Malic acid



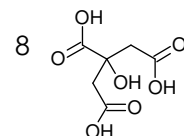
Lactic acid



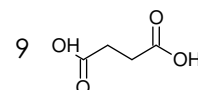
Acetic acid



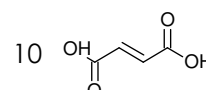
Maleic acid



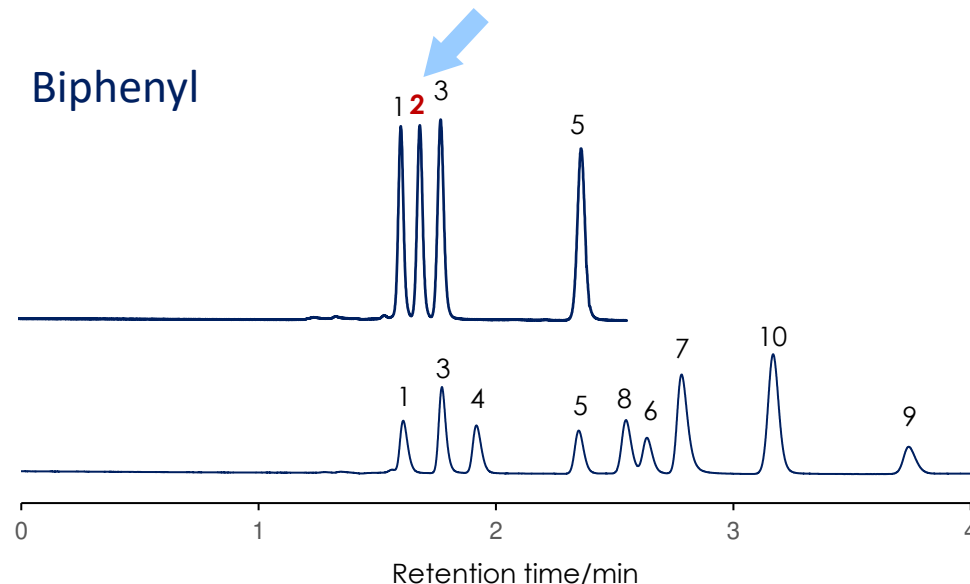
Citric acid



Succinic acid



Fumaric acid



Column: SunShell RP-AQUA, Biphenyl 2.6 μm, 150 x 4.6 mm i.d.

Mobile phase: 0.1% H₃PO₄

Flow rate: 1.0 mL/min

Column pressure: 18 MPa

Temperature: 40 °C

Detection: UV@210 nm

Injection volume: 1 μL