

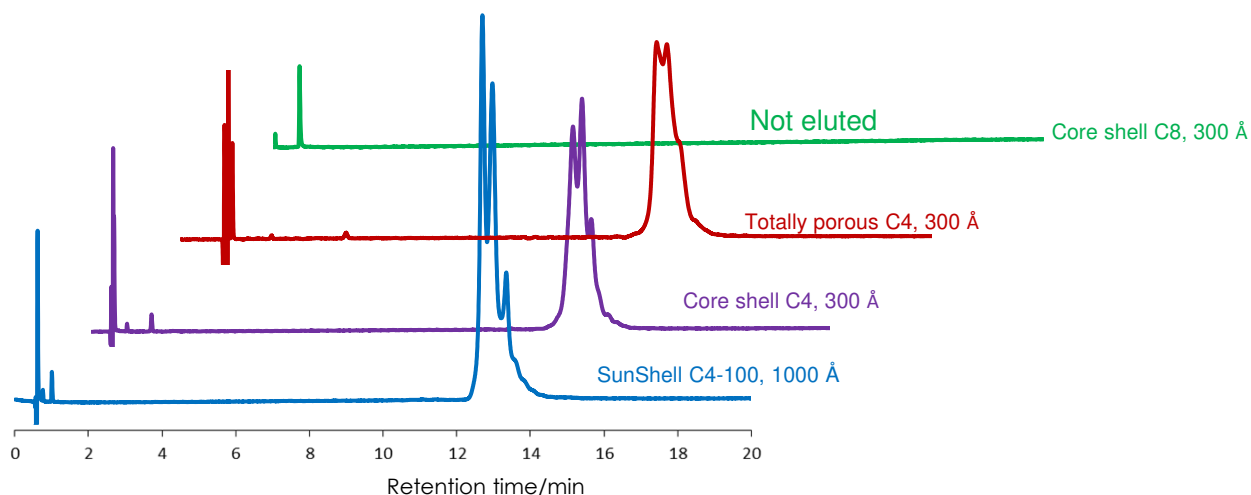
モノクローナル抗体の分離

SunShell C4-100 2.6 μ m, 100 x 2.1 mm i.d.

Monoclonal antibody

SunShell C4-100 2.6 μ m, 100 x 0.15 mm i.d.

Semimicro column 2.1 mm i.d.



Column: SunShell C4-100, 2.6 μ m, 100 x 2.1 mm i.d.

Mobile phase: A) water/TFA (100/0.1)

B) acetonitrile/TFA (100/0.085)

30-45%B (0-30 min)

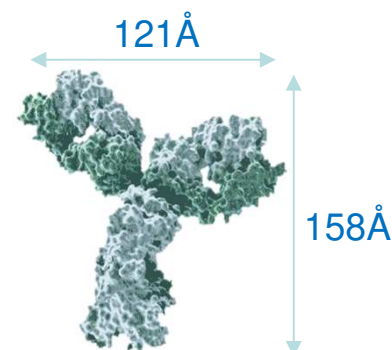
Flow rate: 0.4 mL/min

Temperature: 80 °C

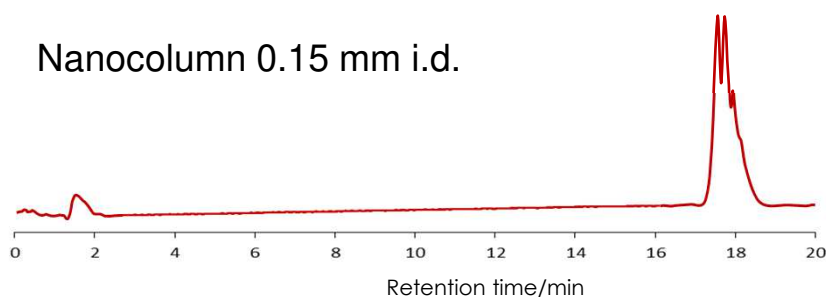
Detection: UV at 215 nm

Injection: 5 μ L

Sample: : Monoclonal antibody purified from cell culture using Protein G



Nanocolumn 0.15 mm i.d.



Column: SunShell C4-100, 2.6 μ m, 100 x 0.15mm i.d.

Flow rate: 0.004 mL/min

Injection: 0.2 μ L

The other conditions are same as shown in the above.