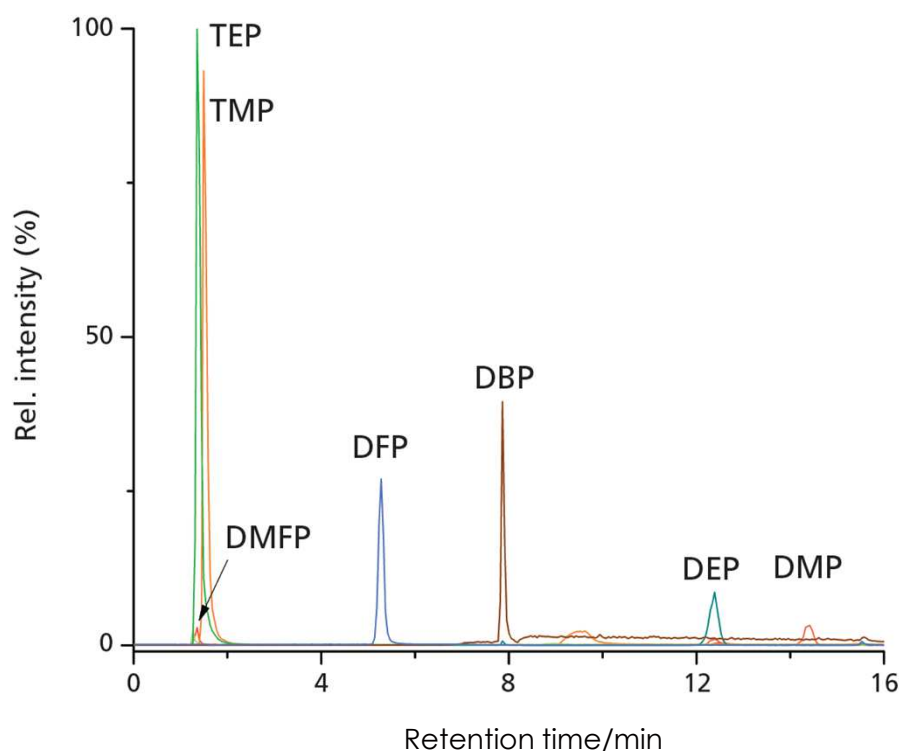


## 有機リン酸エステルの分離(LC/MS)

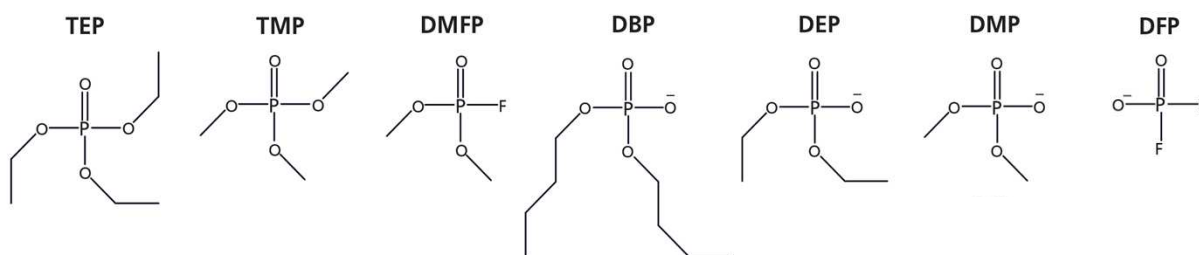
### Organophosphate (LC/MS)

iHILIC-Fusion(+) 3.5  $\mu$ m, 150  $\times$  2.1 mm i.d.

made by HILICON AB



#### Organophosphate standards



LC-MS system: Thermo Ultimate 3000 LC system and AB SCIEX 3200 QTrapR equipped with an ESI source, operated in ESI(+) and ESI(-) mode for analysis of standards.

Column: iHILIC-Fusion(+) 3.5  $\mu$ m 100 $\text{\AA}$ , 150  $\times$  2.1 mm i.d.

Gradient elution: A) acetonitrile; B) deionized water-1 M ammonium formate, pH 2.9 (99.5:0.5); 0-3.5 min (90:10) A-B; 3.5 to 6.5 min, gradient elution from (90:10) A-B to (50:50) A-B; 6.5-14.5 min, (50:50) A-B.

Flow rate: 0.3 mL/min.

Column temperature: 40  $^{\circ}$ C.

Injection volume: 10  $\mu$ L.