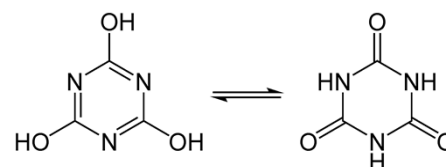
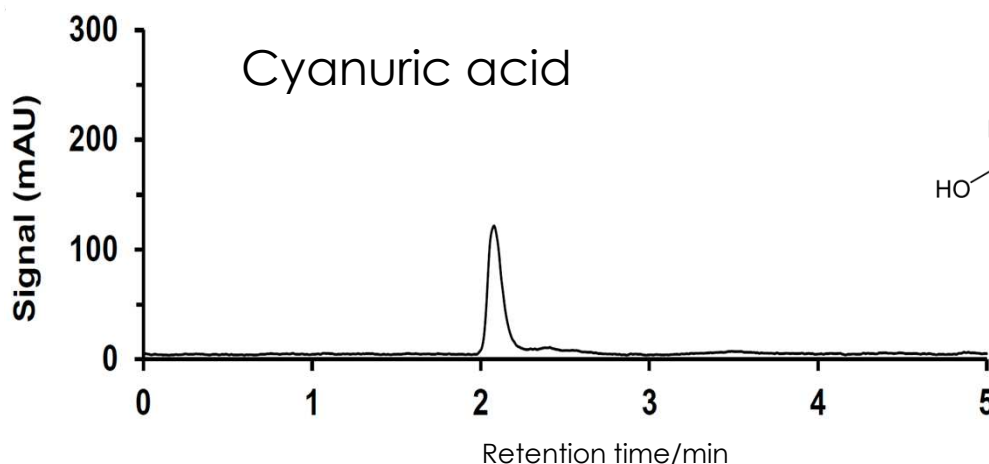
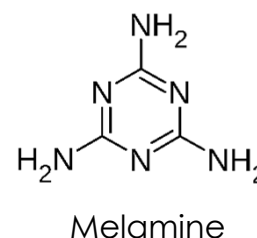
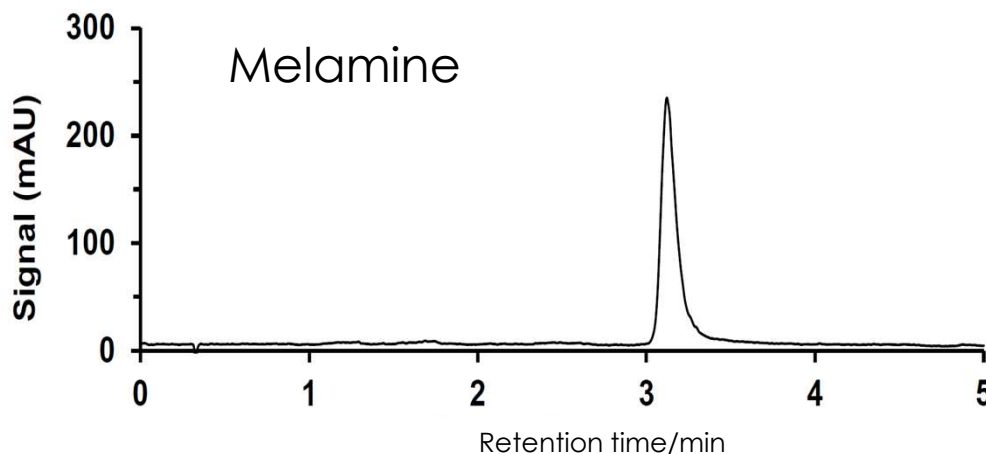


メラミンとシアヌル酸の分離(LC/MS)

Melamine and Cyanuric acid (LC/MS)

iHILIC-Fusion(+) 3.5 μ m, 150 \times 2.1 mm i.d.

made by HILICON AB



Column: iHILIC®-Fusion(+), 3.5 μ m, 100 Å, 150 \times 2.1 mm i.d.

Mobile phase: 10 mM Ammonium Formate, pH 4.0/acetonitrile=80/20 (v/v),

Cyanuric acid

Flow rate: 0.3 mL/min

Back pressure: 108 bar

Temperature: 35 °C

Injection volume: 10 μ L

Sample: Melamine (50 μ g/mL); Cyanuric acid (50 μ g/mL)

Sample diluent: 80/20 (v/v), Acetonitrile/H₂O

Detection: NQAD Detector at 35 °C and 1.3 S filter setting