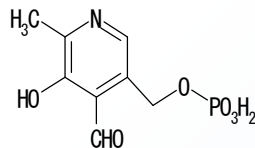


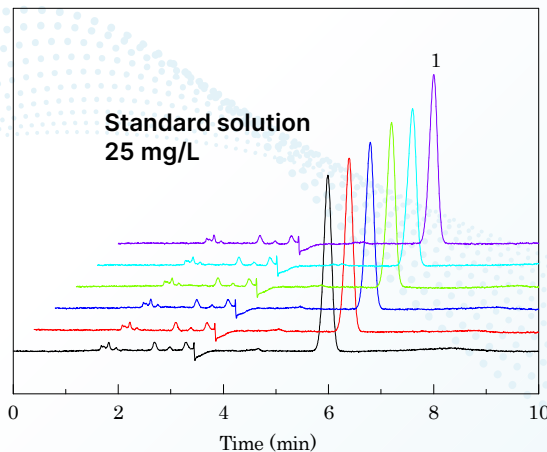
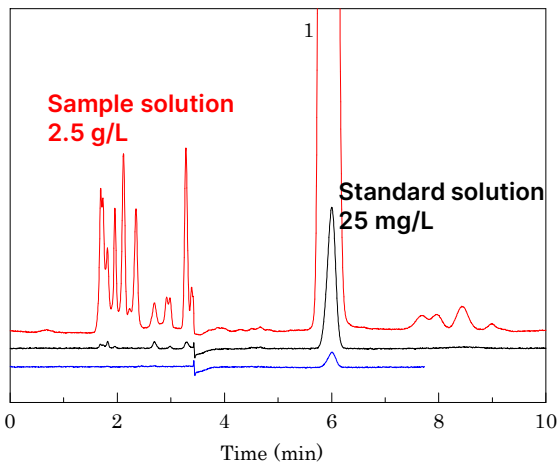
Japanese pharmacopoeia : Purity test of pyridoxal phosphate hydrate

[Analytical conditions]

Column : *L-column2 ODS* (C18, 5 μ m, 12 nm); 4.6 mm I.D. \times 250 mm L; Cat. No. 722080
 Dissolve 3.63 g of potassium dihydrogen phosphate and 5.68 g of anhydrous disodium hydrogen phosphate
 Mobile phase : phosphate
 in water to make 1000 mL.
 Flow rate : 1.5 mL/min
 Temperature : 30°C
 Detection : UV 254 nm
 Inject volume : 5 μ L
 System : NEXERA (SHIMADZU CORPORATION)



Sample solution : 2.5 g/L
 Standard solution : 25 mg/L
 Test for required detectability : 2.5 mg/L



| | Require | Measure |
|------------------------|----------|---------|
| Detectability 2.5 mg/L | 7~13 % | 10% |
| System performance | | |
| Theoretical plates | >3000 | 6505 |
| Symmetry | <1.5 | 0.91 |
| System repeatability | SD <2.0% | SD 0.3% |