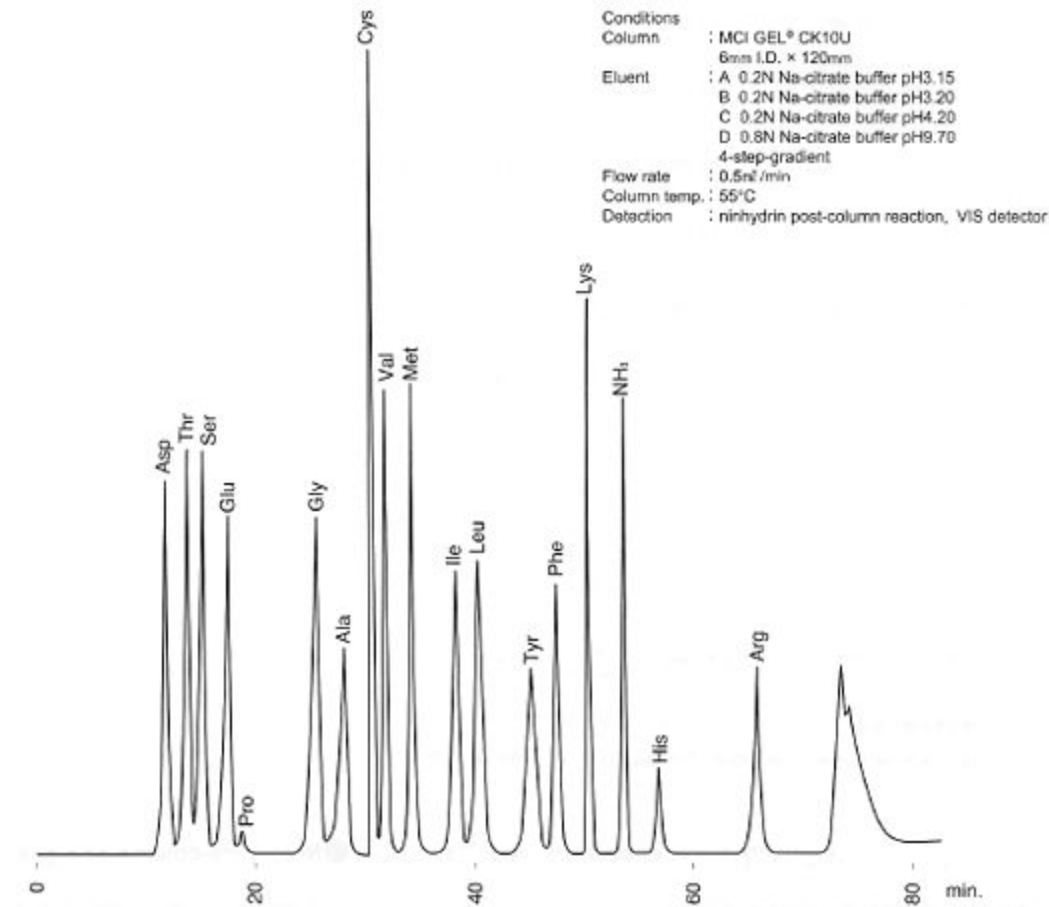


Application Of MCI GEL CK10U Column

Separation of amino acids on MCI GEL™ CK10U column



As for analysis of amino acids by a cation exchange column such as MCI GEL™ CK10U, MCI GEL™ AFR2-PC is recommended as a [pre-column](#). The AFR2-PC column is very effective to stabilize base line because ammonium in eluent is trapped in this column. The ammonium ion may disturb base line stability. The AFR2-PC should be installed between an outlet of HPLC pump and an inlet of sample injector. A gradient elution, commonly used for amino acid analysis, is influenced by HPLC instrument. So to obtain a satisfactory chromatogram, gradient conditions should be optimized in accordance with the HPLC equipment.