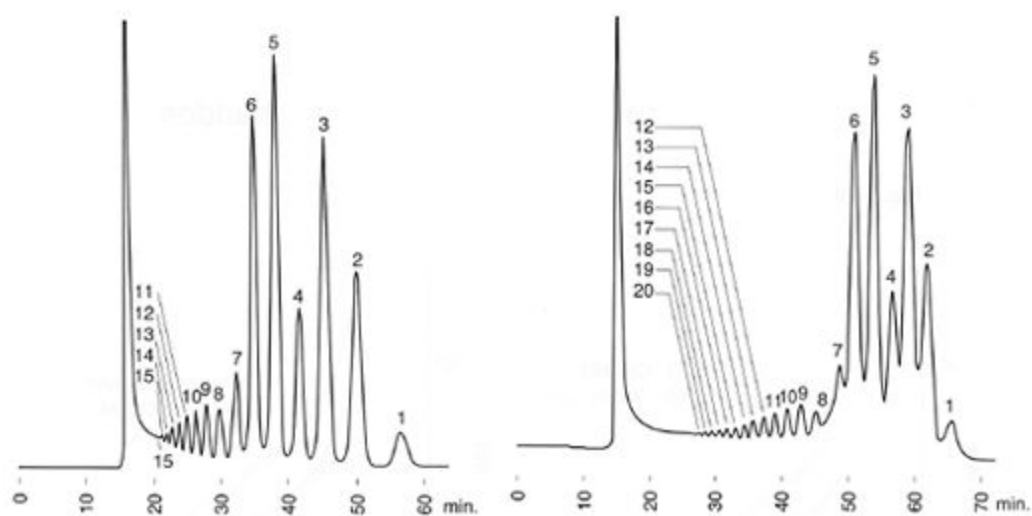


# Application of MCI GEL CK02A and CK02AS Columns

Separation of Malto-Oligosaccharides on MCI GEL™ CK02A (left) and CK02AS (right) Columns



Conditions  
Eluent :H<sub>2</sub>O  
:0.4ml/min(Fig.2-21,2-22,2-25,2-26)  
:1.0ml/min(Fig.2-23,2-24,2-27)  
Column temp :85°C  
Detection :RI  
The numbers indicate degree of polymerization.