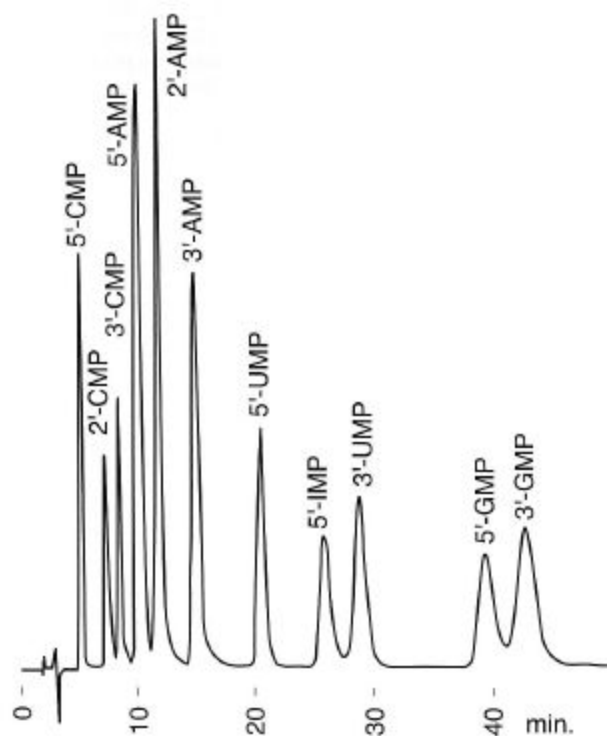


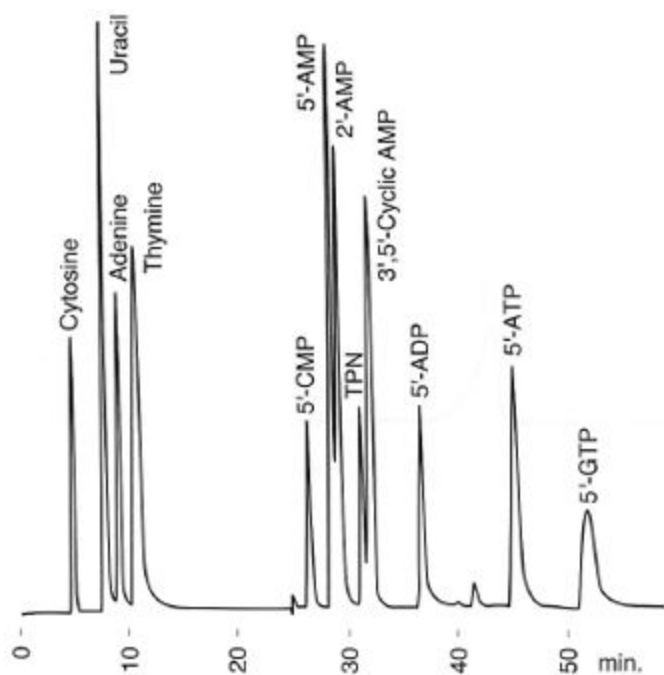
Applications of MCI GEL CDR10 Column

Separation of Mononucleotides on MCI GEL™ CDR10 Column



Conditions
Column : MCI GEL® CDR10
 4.6mm I.D.×250mm
Eluent : 1M Acetate buffer pH3.3
Flow rate : 1.2 ml/min
Column temp.: 60°C
Detection : 254nm

Separation of Mononucleic Acid and Related Compounds on MCI GEL™ CDR10 Column



Conditions
 Column : MCI GEL® CDR10
 4.6mm I.D.×250mm
 Eluent : A H₂O
 B 6M Acetate buffer pH4.4
 A→B 30min linear gradient
 Flow rate : 0.5 mL/min
 Column temp. : 60°C
 Detection : 254nm