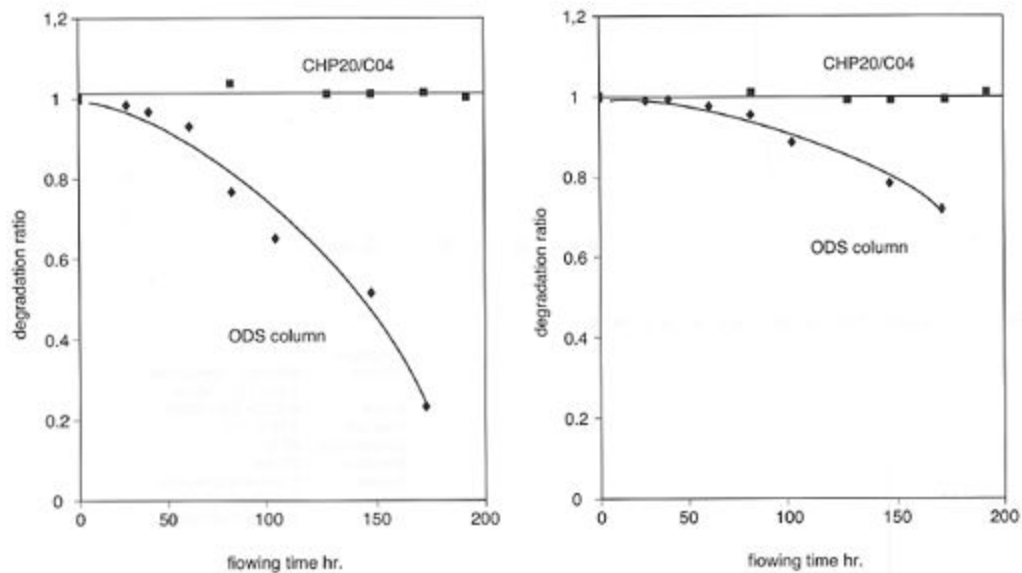


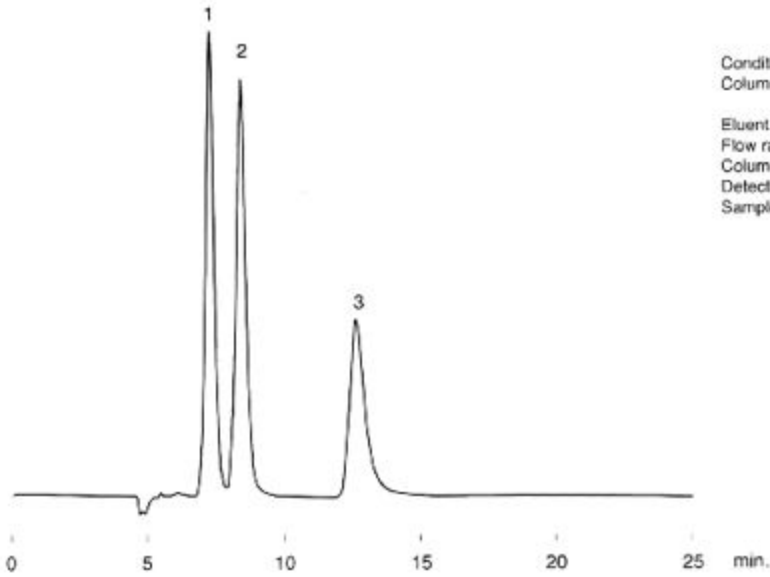
Applications of MCI GEL™ CHP20/C04 and ODS Columns

Column durability at pH 12 comparison between MCI GEL™ CHP20/C04 and an ODS column

Conditions
Column : MCI GEL® CHP20/C04 4.6mm I.D × 150mm
Eluent : 20mM Na₂HPO₄ pH12/CH₃CN=60/40
Flow rate : 0.4 ml/min
Column temp. : 25°C
Detection : 254nm
Sample : 1000ppm Dimethyl phthalate 5µL

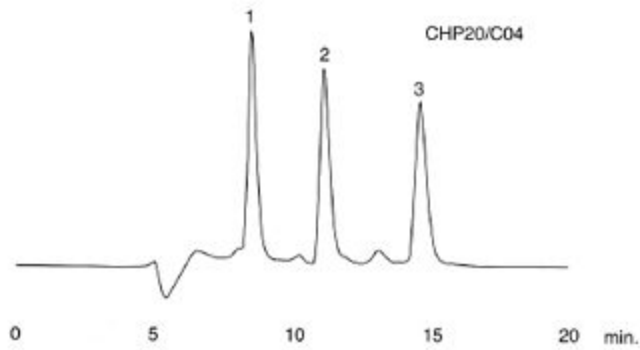


Separation of purine alkaloids on MCI GEL™ CHP20/C04 column

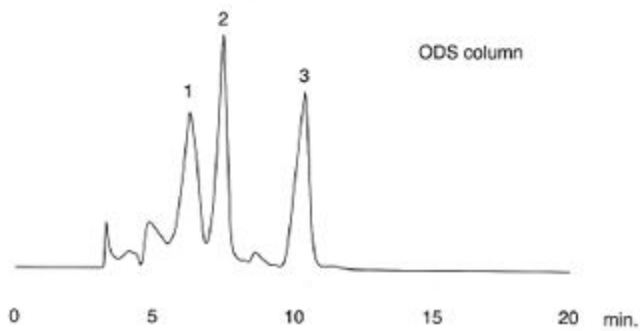


Conditions
 Column : MCI GEL® CHP20/C04
 4.6mm I.D.×150mm
 Eluent : H₂O/CH₃CN=10/90
 Flow rate : 0.4 ml/min
 Column temp. : 25°C
 Detection : 275nm
 Sample : 1.Theophylline
 2.Theobromine
 3.Caffeine

Separation of bile acids on MCI GEL™ CHP20/C04 column, comparison with an ODS column



Conditions
 Column : MCI GEL® CHP20/C04
 4.6mm I.D.×150mm
 Eluent : 50mM NaH₂PO₄ pH2.0
 /CH₃CN=40/60
 Flow rate : 0.3ml/min
 Column temp. : 25°C
 Detection : 210nm
 Sample : 1.Cholic acid
 2.Ursodeoxycholic acid
 3.Deoxycholic acid



Conditions
 Column : ODS column (5µm)
 4.6mm I.D.×150mm
 Eluent : 50mM NaH₂PO₄ pH6.0
 /CH₃CN=40/60
 Flow rate : 0.3 ml/min
 Column temp. : 25°C
 Detection : 210nm
 Sample : 1.Cholic acid
 2.Ursodeoxycholic acid
 3.Deoxycholic acid