

抗てんかん剤の分析

Analysis of Anti-epilepsy medicines

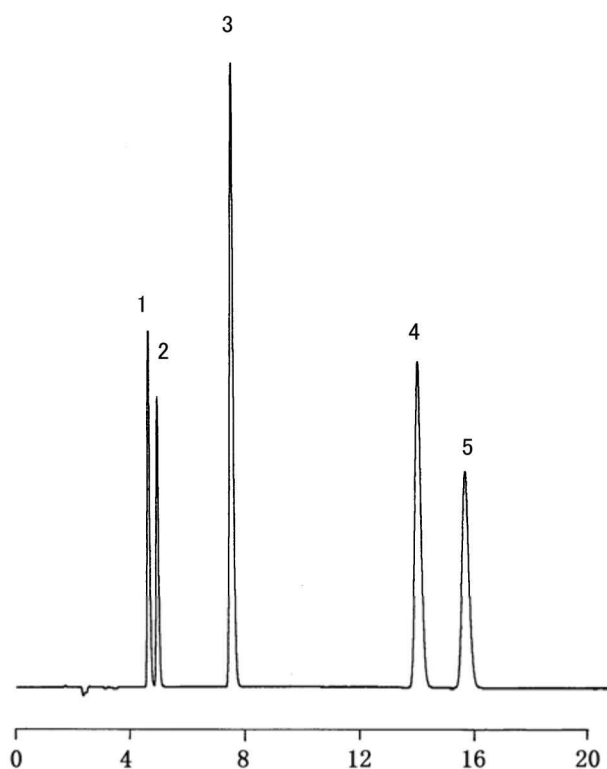
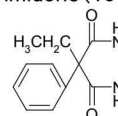
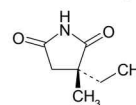


Fig. Chromatogram of Anti-epilepsy medicines.

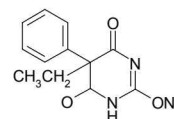
1. Primidone (10 mg/L)



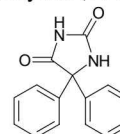
2. Ethosuximide (100 mg/L)



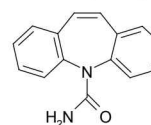
3. Phenobarbital sodium salt (20 mg/L)



4. Phenytoin (10 mg/L)



5. Carbamazepine (5 mg/L)



【Analytical conditions】

Column: **L-column ODS** (C18, 5 μm, 12 nm) 4.6 mm I.D. × 250 mm L.  
 Mobile phase: CH<sub>3</sub>CN/20 mM Phosphate buffer pH 6.8 (32/68)

Flow rate: 1 mL/min  
 Temperature: Ambient  
 Detection: UV 220 nm  
 Injection volume: 25 μL  
 System: