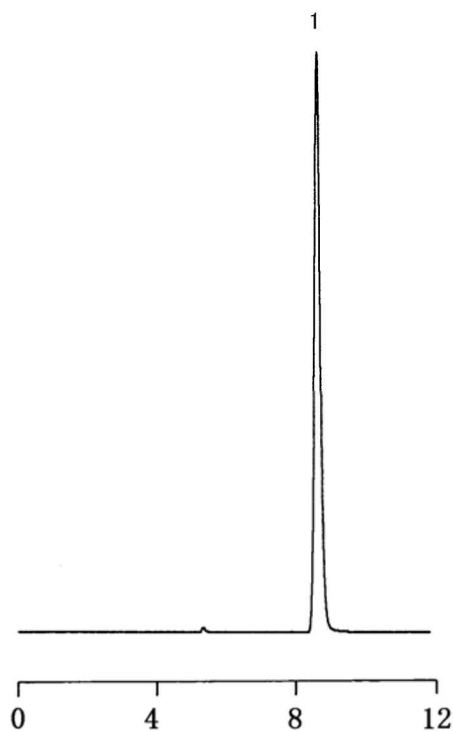


ベルベリンの分析
Analysis of Berberine



1. Berberine chloride

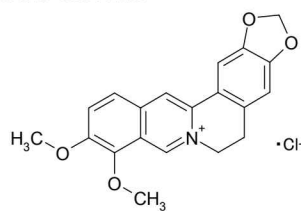


Fig. Chromatogram of Berberine chloride.

【Analytical conditions】

Column: **L-column ODS**(C18, 5 μm, 12 nm) 4.6 mm I.D. × 150 mm L.
Mobile phase: CH₃CN/10 mM NaH₂PO₄ + 100 mM NaClO₄ (40/60)

Flow rate: 1 mL/min
Temperature: Ambient
Detection: UV 340 nm
Injection volume: -
System: -