

風邪薬成分の一斉分析

Analysis of Cold medicine

市販風邪薬に配合されている有効成分について、一斉分析を行いました。

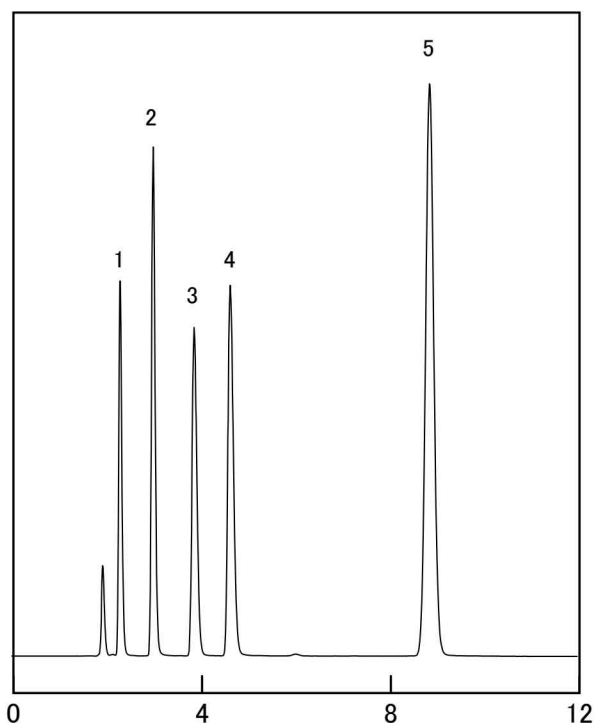
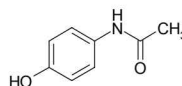
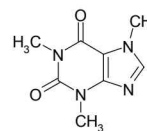


Fig. Chromatogram of Cold medicine.

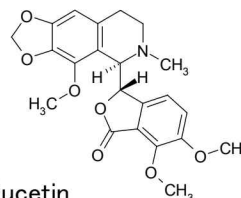
1. Acetaminophen



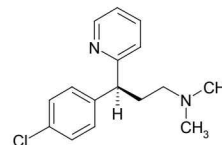
2. Caffeine



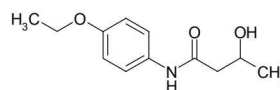
3. Noscapine



4. Chlorpheniramine



5. Bucetin



(0.03~0.3 g/L)

【Analytical conditions】

Column: **L-column ODS**(C18, 5 μm, 12 nm) 4.6 mm I.D. × 150 mm L.  
 Mobile phase: CH<sub>3</sub>OH/20 mM H<sub>3</sub>PO<sub>4</sub>(40/60)

Flow rate: 1 mL/min  
 Temperature: 40°C  
 Detection: UV 254 nm  
 Injection volume: 1 μL  
 System: -