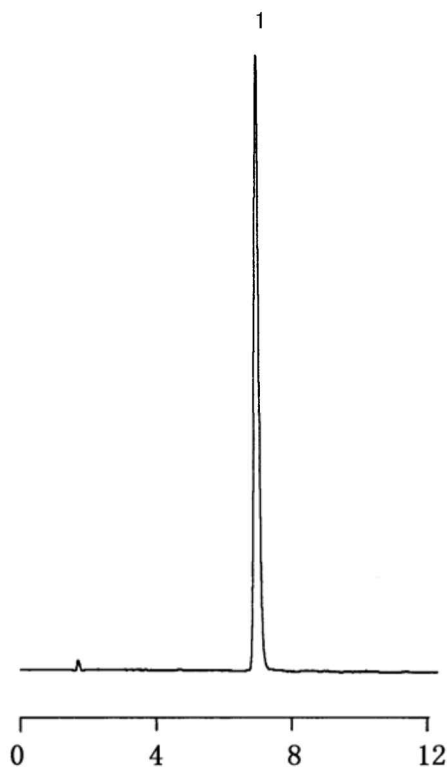


ハロペリドールの分析

Analysis of Haloperidol



1. Haloperidol

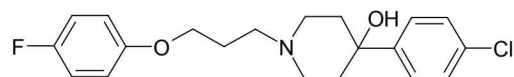


Fig. Chromatogram of Haloperidol.

【Analytical conditions】

Column: **L-column ODS**(C18, 5 μm, 12 nm) 4.6 mm I.D. × 150 mm L.
 Mobile phase: CH₃CN/20 mM Phosphate buffer pH 6.8(45/55)

Flow rate: 1 mL/min
 Temperature: 40°C
 Detection: UV 254 nm
 Injection volume: -
 System: -