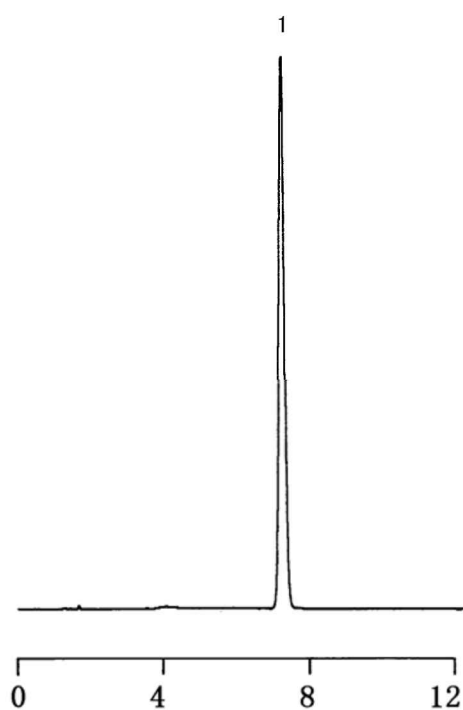


リドカインの分析
Analysis of Lidocaine



1. Lidocaine

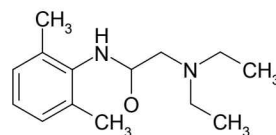


Fig. Chromatogram of Lidocaine.

【Analytical conditions】

Column: **L-column ODS**(C18, 5 μm, 12 nm) 4.6 mm I.D. × 150 mm L.
Mobile phase: CH₃CN/20 mM Phosphate buffer pH 6.8(50/50)

Flow rate: 1 mL/min
Temperature: 40°C
Detection: UV 210 nm
Injection volume:
System: