

三環系抗うつ剤の分析

Analysis of Tricyclic antidepressants

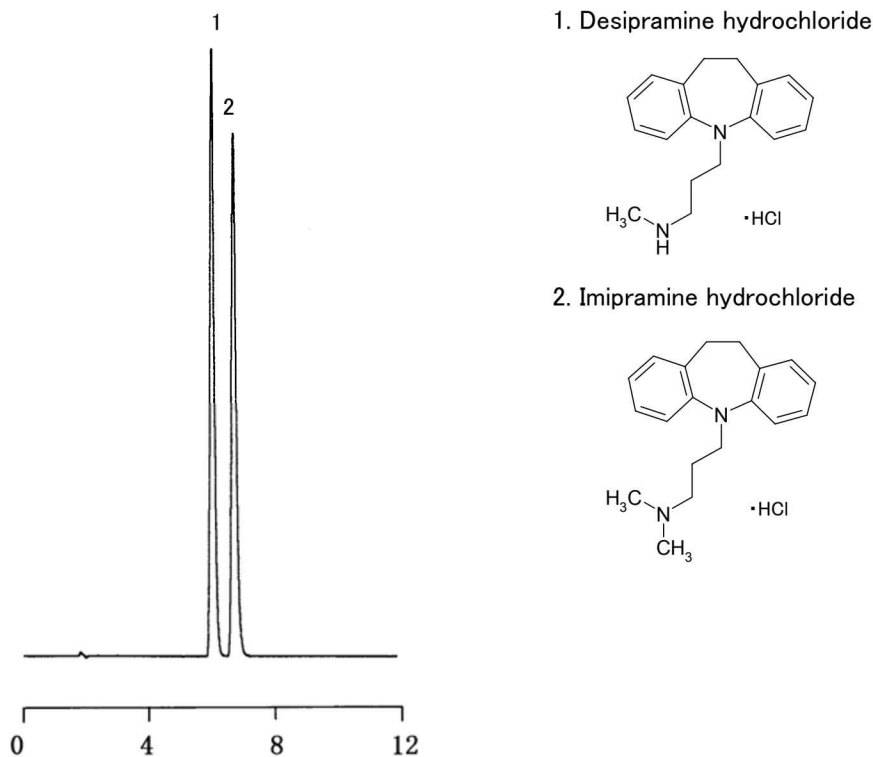


Fig. Chromatogram of Tricyclic antidepressants.

【Analytical conditions】

Column: **L-column ODS**(C18, 5 μm, 12 nm) 4.6 mm I.D. × 150 mm L.
 Mobile phase: CH₃CN/50 mM NaH₂PO₄(35/65)

Flow rate: 1 mL/min
 Temperature: 40°C
 Detection: UV 250 nm
 Injection volume: -
 System: -