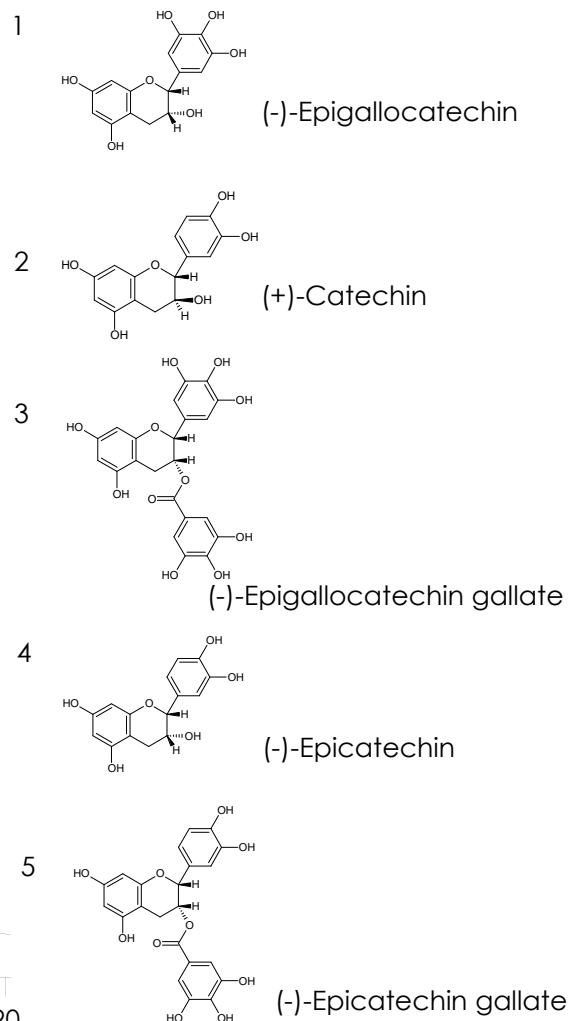
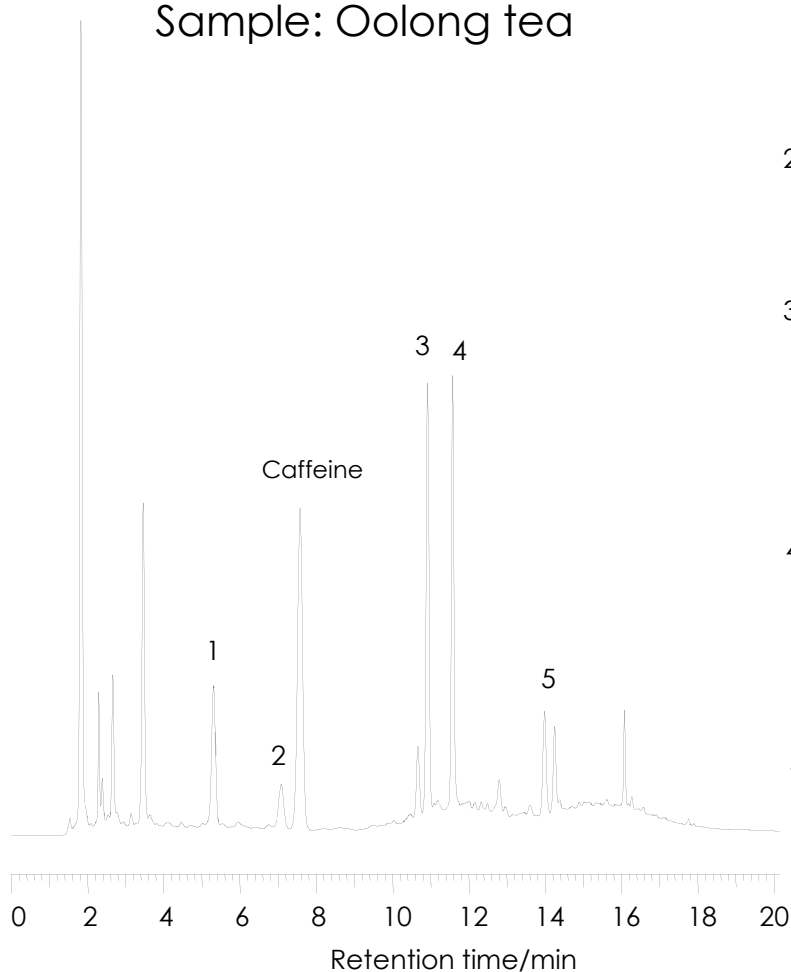


カテキン類 (1)

Catechins (1)

Sunniest C18 5 μ m, 150 x 4.6 mm i.d.

Sample: Oolong tea



Column: Sunniest C18 5 μ m, 150 x 4.6 mm i.d.

Mobile phase: A) H₂O/CH₃CN/85% H₃PO₄ (95:5:0.05)

B) H₂O/CH₃CN/85% H₃PO₄ (50:50:0.05)

Time (min)	0	5	8	10	15	20
%B	10	10	30	30	80	80

Flow rate: 1.0 mL/min

Temperature: 40 °C

Detection: UV@230 nm

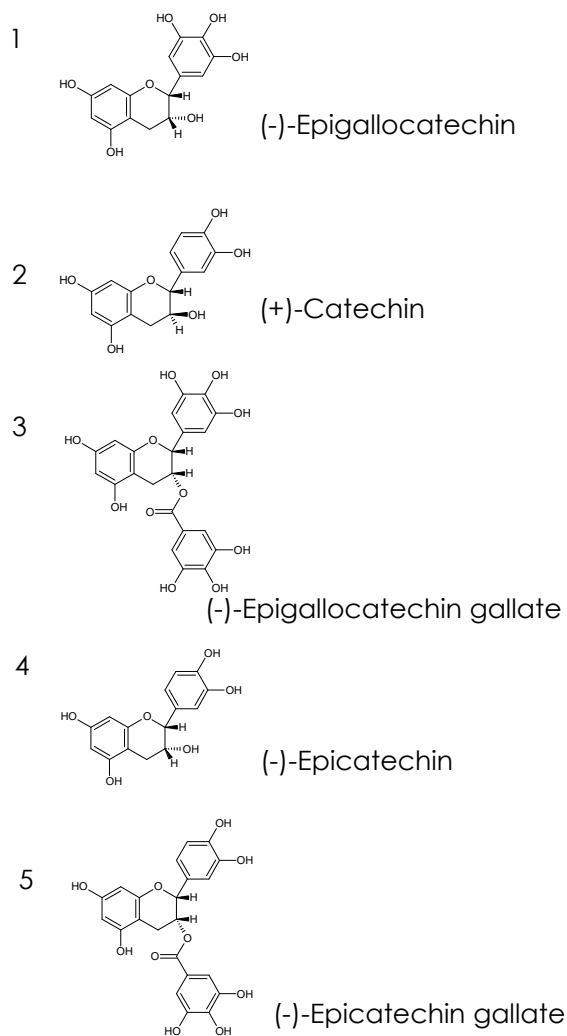
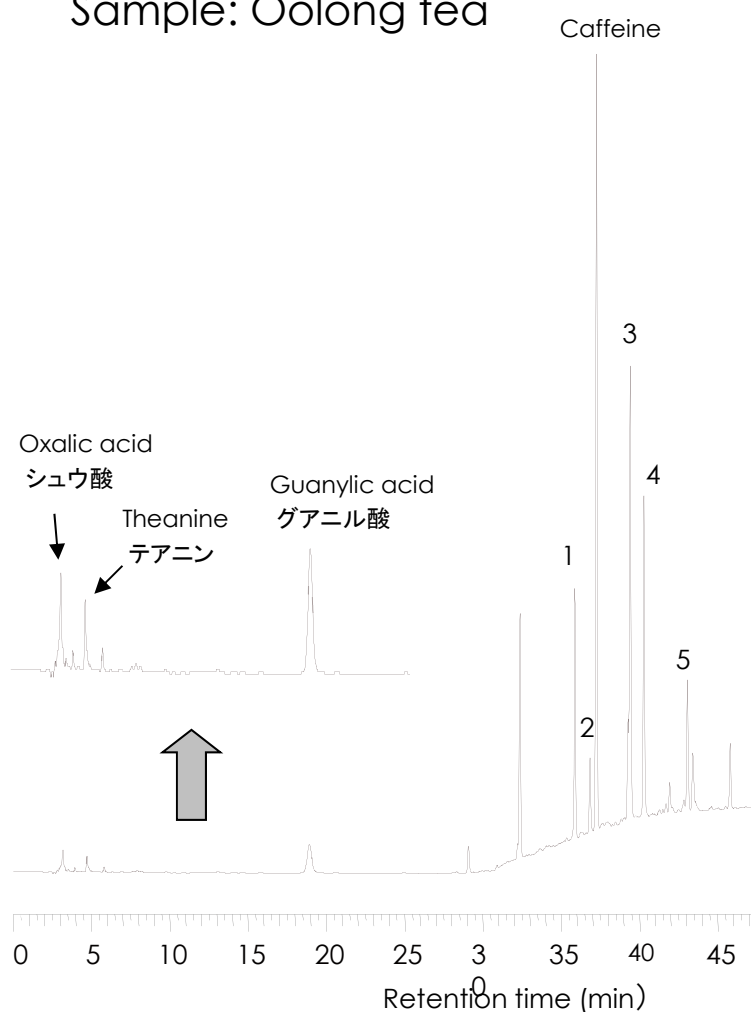
Injection volume: 10 μ L

カテキン類 II

Catechins II

Sunniest RP-AQUA 5 μ m, 150 x 4.6 mm i.d.

Sample: Oolong tea



Column: Sunniest RP-AQUA 5 μ m, 250 x 4.6 mm i.d.

Mobile phase: A) H₂O/H₃PO₄ (99.9:0.1)

B) CH₃CN

Time (min)	0	20	60
%B	0	0	50

Flow rate: 1.0 mL/min

Temperature: 40 °C

Detection: UV@210 nm

Injection volume: 10 μ L