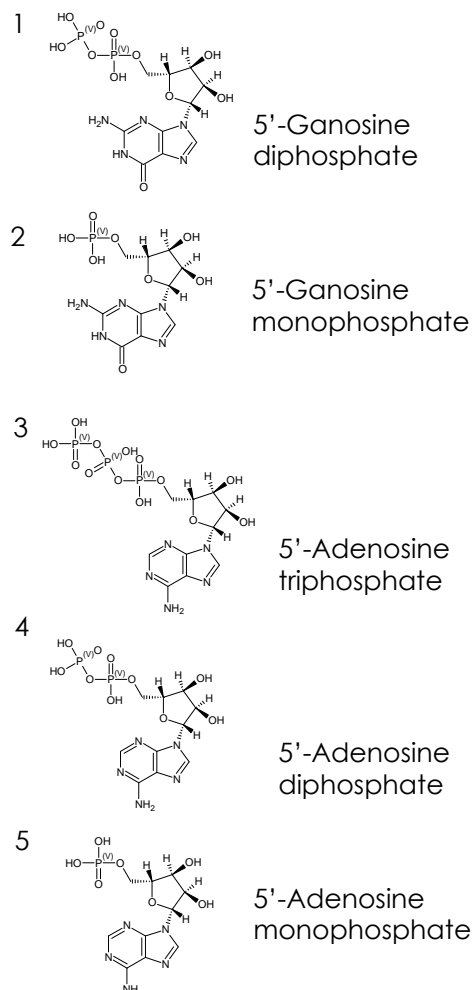
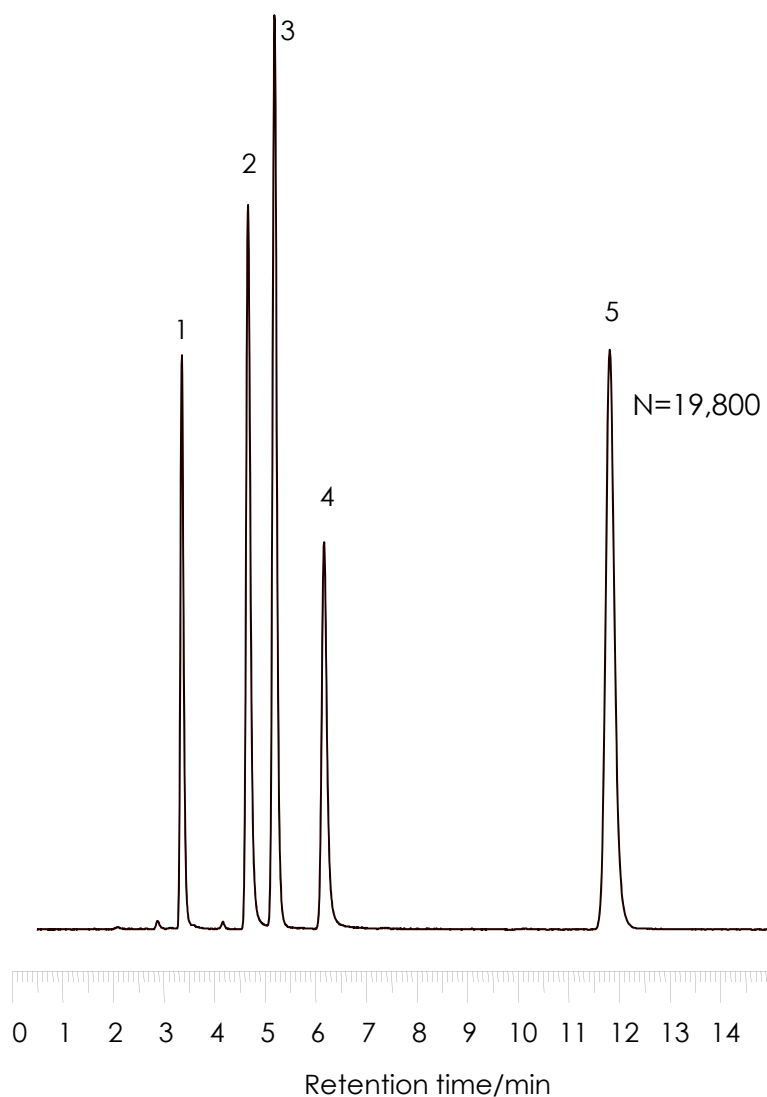


ヌクレオチドの分離

Nucleotides

Sunniest RP-AQUA 3 μ m, 150 x 4.6 mm i.d.



Column: Sunniest RP-AQUA 3 μ m, 150 x 4.6 mm

Mobile phase: 20mM Phosphate buffer pH6.0

Flow rate: 1.0 mL/min

Temperature: 40 °C

Detection: UV@250nm

Sample: 1 = 5'-GDP, 2 = 5'-GMP, 3 = 5'-ATP, 4 = 5'-ADP, 5 = 5'-AMP