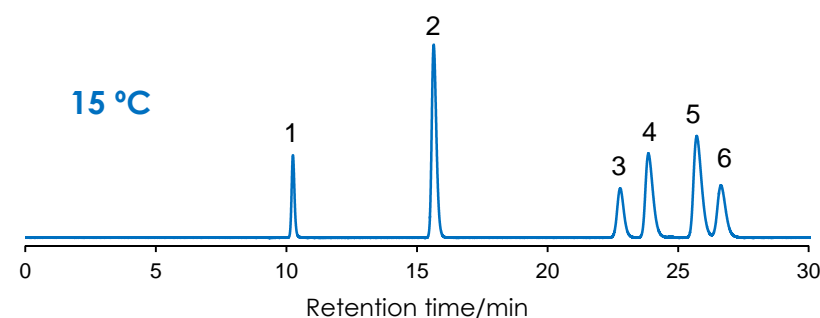
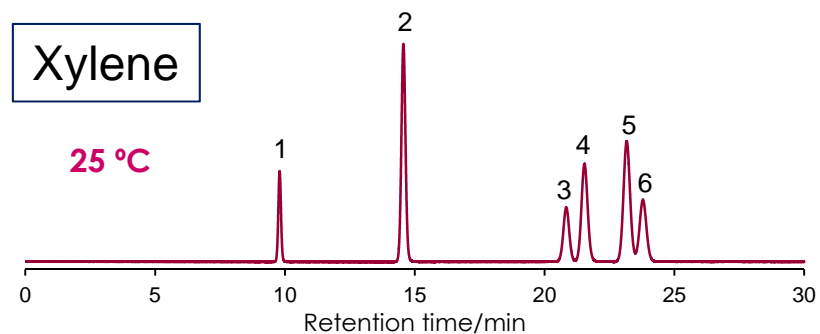


異性体の分離 (キシレン、クレゾール)

Isomers (ortho, meta and para) of xylene and cresol



Sunrise C28 3 μm, 250 x 4.6 mm i.d.

SunShell PFP 2.6 μm, 150 x 4.6 mm i.d.

Column: Sunrise C28 3 μm, 250 x 4.6 mm

Mobile phase: CH₃OH/H₂O=70:30

Flow rate: 0.7 mL/min

Temperature: 25 °C and 15 °C

Detection: UV@250nm

Sample: BTEX

1 = Benzene

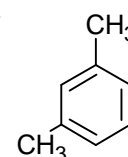
2 = Toluene

3 = Ethylbenzene

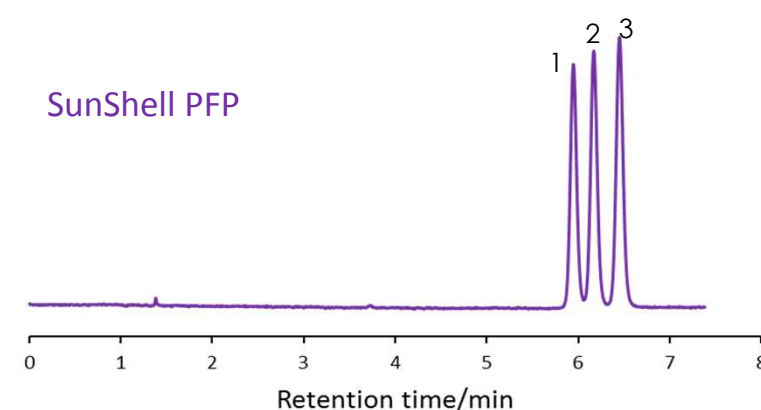
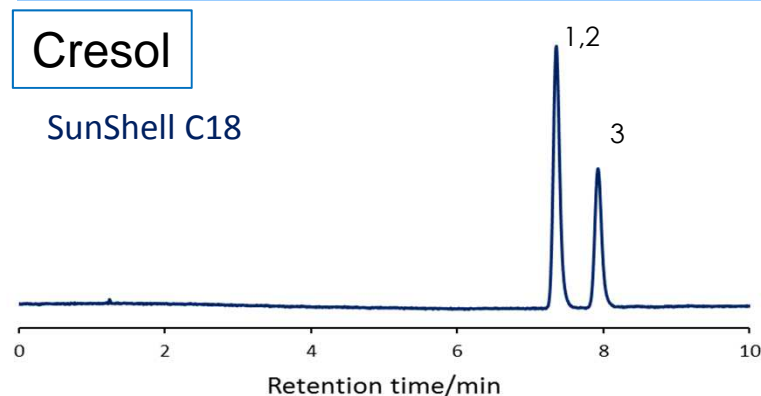
4 = o-Xylene

5 = m-Xylene

6 = p-Xylene



LC instrument: X-LC (Jasco)



Column:

SunShell C18 2.6 μm, 150 x 4.6 mm

SunShell PFP 2.6 μm, 150 x 4.6 mm

Mobile phase: CH₃OH/H₂O=40/60

Flow rate: 1.0 mL/min

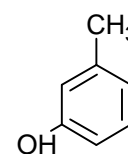
Temperature: 25 °C

Detection: UV@250nm

Sample: 1 = p-Cresol

2 = m-Cresol

3 = o-Cresol



LC instrument: X-LC (Jasco)