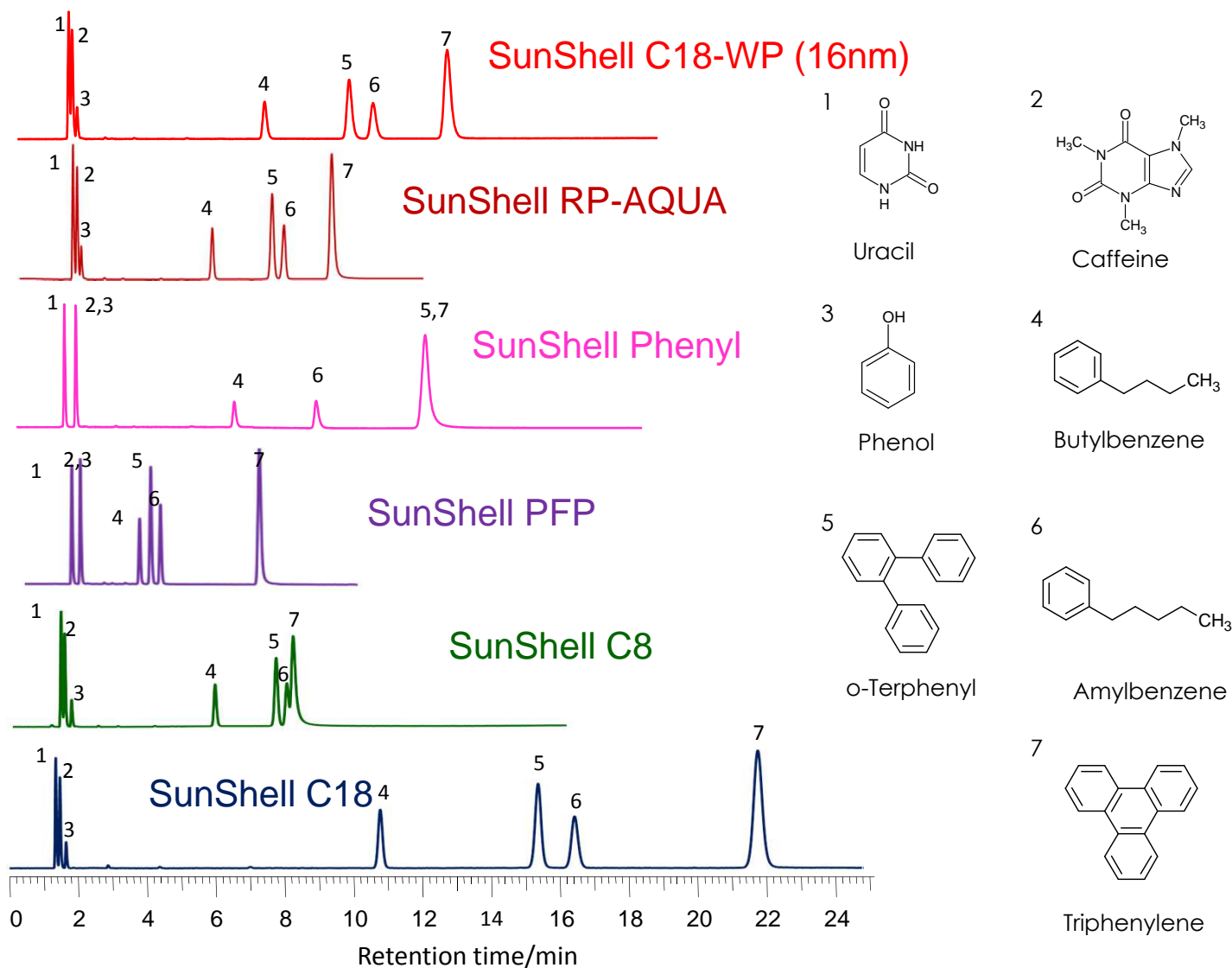


SunShellカラムの標準試料の分離比較

Comparison of SunShell phases

SunShell 2.6 μm, 150 x 4.6 mm i.d.



Column dimension: 150 x 4.6 mm

Mobile phase: CH₃OH/H₂O=75/25

Flow rate: 1.0 mL/min

Temperature: 40 °C

Sample: 1 = Uracil, 2 = Caffeine,

3 = Phenol, 4 = Butylbenzene,

5 = o-Terphenyl, 6 = Amylbenzene,

7 = Triphenylene.

| | Hydrogen bonding (Caffeine/ Phenol) | Hydrophobicity (Amylbenzene/ Butylbenzene) | Steric selectivity (Triphenylene/ o-Terphenyl) |
|---------|---|--|--|
| C18-WP | 0.40 | 1.55 | 1.35 |
| RP-AQUA | 0.52 | 1.52 | 1.30 |
| Phenyl | 1.00 | 1.48 | 1.00 |
| PFP | 1.00 | 1.31 | 2.38 |
| C8 | 0.32 | 1.46 | 1.08 |
| C18 | 0.39 | 1.60 | 1.46 |