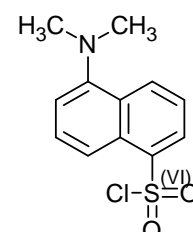
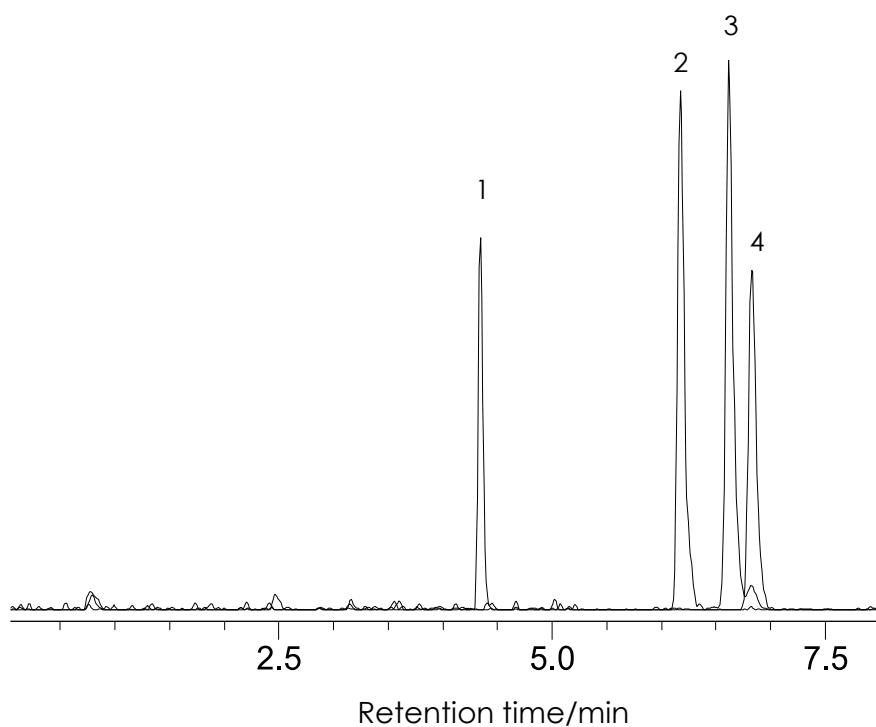


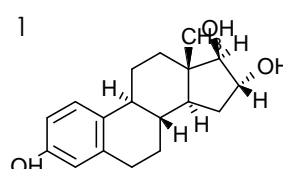
ダンシル化エストロゲン(女性ホルモン)の分離

Dansylated estrogen hormones

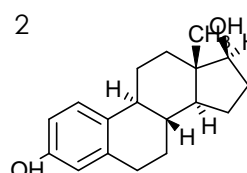
SunShell C18 2.6 μm , 100 x 2.1 mm i.d.



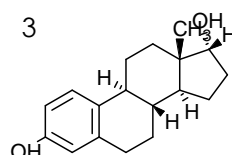
Dansyl chloride



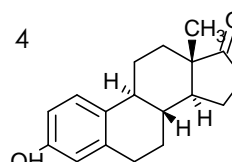
1
Estriol,



2
17Beta-estradiol,



3
17Alpha-estradiol



4
Estrone

Column: SunShell C18 2.6 μm , 100 x 2.1 mm

Mobile phase:

A) H₂O with 0.1% formic acid.

B) CH₃CN with 0.1% formic acid.

Gradient program:

0 - 0.5 min: 10% B

0.51 - 3.0 min: 10 - 72% B

3.01 - 6.0 min: 72% B

6.01 - 7.0 min: 72 - 100% B

7.01 - 10.0 min: 100% B

Flow rate: 0.45 mL/min.

Temperature: 40 °C

Detection: MS(sim), m/z, 522.20, 506.20, 504.20

Samples: 1. Dansylated estriol, 2. Dansylated 17beta-estradiol,

3. Dansylated 17alpha-estradiol, 4. Dansylated estrone

Courtesy of Department of Chemistry & Biochemistry, The University of Texas at Arlington