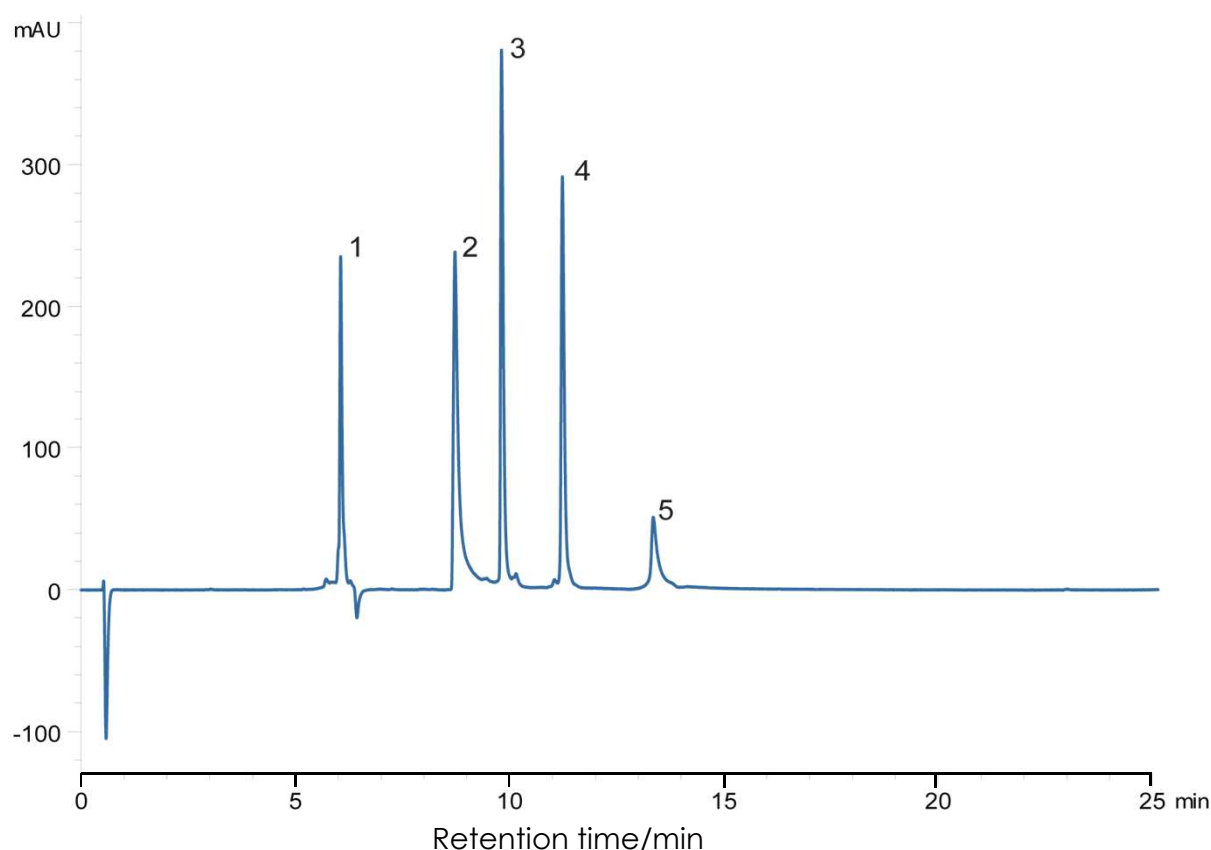


## タンパク質の分離(4)

SunShell C4-30 2.6  $\mu$ m, 100 x 2.1 mm i.d.

### Protein Mix using SunShell C4-30



Column: SunShell C4-30 2.6  $\mu$ m (30 nm), 100 x 2.1 mm

Mobile phase: A) 0.1% TFA in water

B) 0.1% TFA in acetonitrile

Gradient program:	Time(min)	0	20
	%B	22	70.5

Flow rate: 0.50 mL/min

Temperature: 40 °C

Detection: UV@214 nm

Injection volume: 10  $\mu$ L

Concentration: 0.01  $\mu$ g/ $\mu$ L each protein

Sample:

1. Cytochrome C
2. Bovine Serum Albumin
3. Myoglobin
4. Carbonic Anhydrase
5. Phosphorylase B