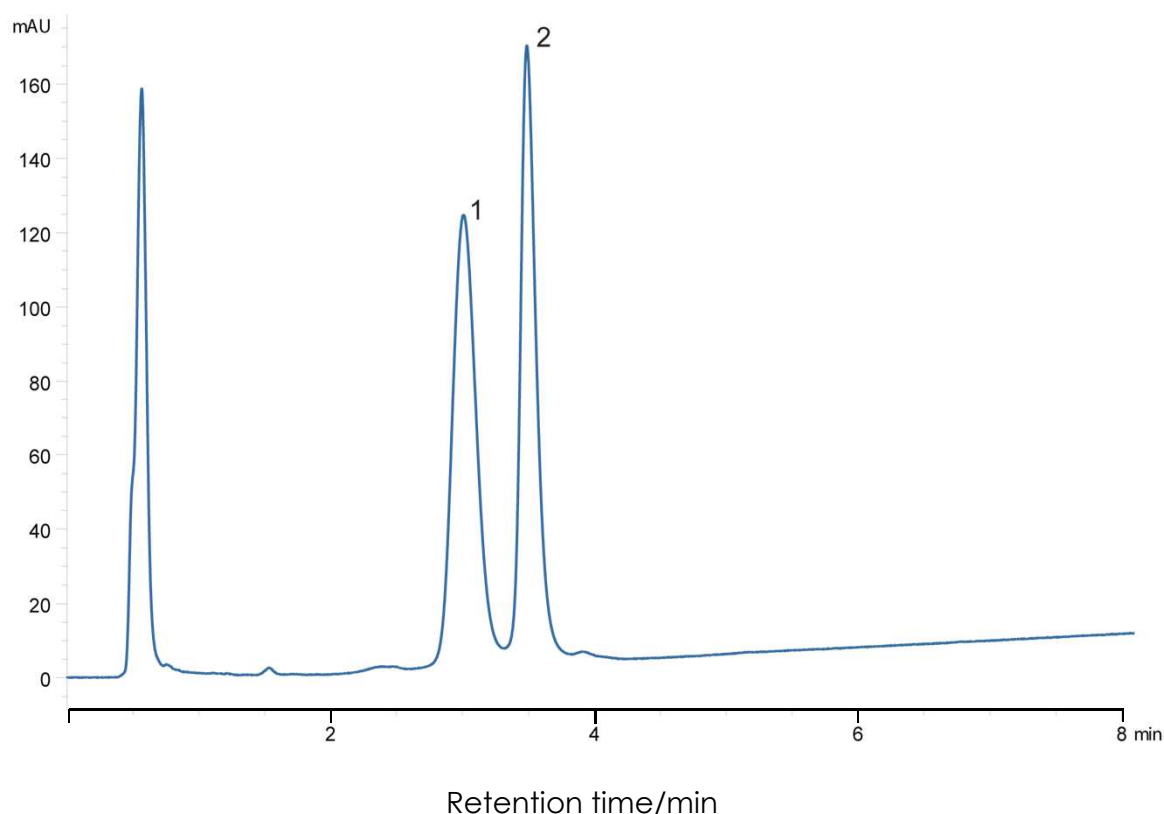


## リボヌクレアーゼA/Bの分離(1)

SunShell C18-16 2.6  $\mu$ m, 100 x 2.1 mm i.d.

## Ribonuclease A/B Mix using SunShell C18-16



Column: SunShell C18-16 2.6  $\mu$ m (16 nm), 100 x 2.1 mm

Mobile phase: A) 0.1% TFA in water

B) 0.1% TFA in acetonitrile

Gradient program:	Time(min)	0	7
	%B	25	35

Flow rate: 0.50 mL/min

Temperature: 40 °C

Detection: UV@214 nm

Injection volume: 10  $\mu$ L

Concentration: 0.01  $\mu$ g/ $\mu$ L each protein

Sample:

1. Ribonuclease B

2. Ribonuclease A