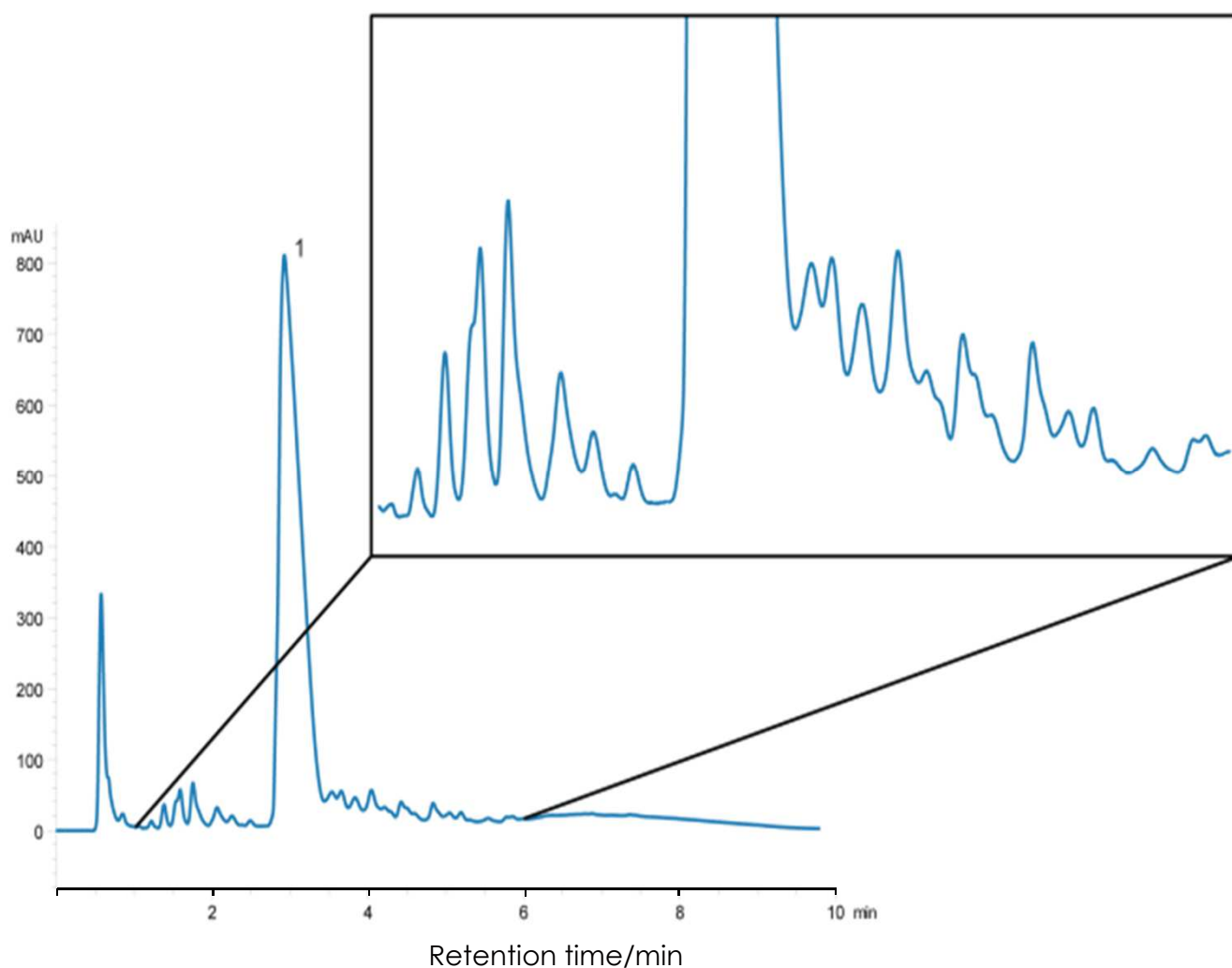


酸化型インスリンの分離

SunShell C18-30 2.6 μ m, 100 x 2.1 mm i.d.

Oxidized Insulin using SunShell C18-30



Column: SunShell C18-30 2.6 μ m (30 nm), 100 x 2.1 mm

Mobile phase: A) 0.1% TFA in water

B) 0.1% TFA in acetonitrile

Gradient program:

Time(min)	0	10
%B	30	40

Flow rate: 0.50 mL/min

Temperature: 40 $^{\circ}$ C

Detection: UV@214 nm

Injection volume: 10 μ L

Concentration: 0.01 μ g/ μ L each protein

Sample:

1. Oxidized insulin