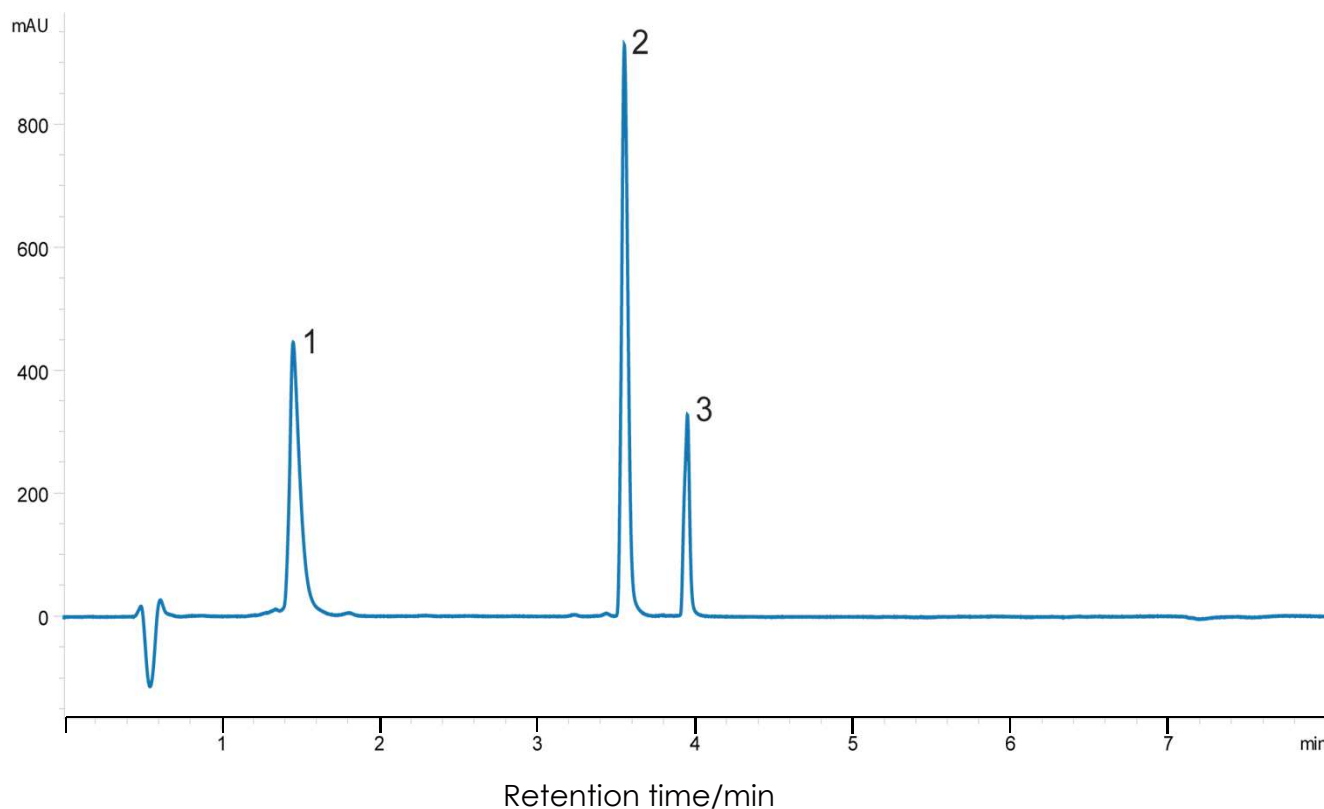


ペプチドの分離(2)

SunShell C18-16 2.6 μ m, 100 x 2.1 mm i.d.

Peptide Mix using SunShell C18-16



Column: SunShell C18-16 2.6 μ m (16 nm), 100 x 2.1 mm

Mobile phase: A) 0.1% TFA in water

B) 0.1% TFA in acetonitrile

Gradient program:

| Time(min) | 0 | 1 | 6 |
|-----------|----|----|----|
| %B | 20 | 20 | 95 |

Flow rate: 0.50 mL/min

Temperature: 40 °C

Detection: UV@214 nm

Injection volume: 10 μ L

Concentration: 0.10 μ g/ μ L each protein

Sample:

1. Angiotensin I
2. Somatostatin
3. Glu-1-fibrinopeptide