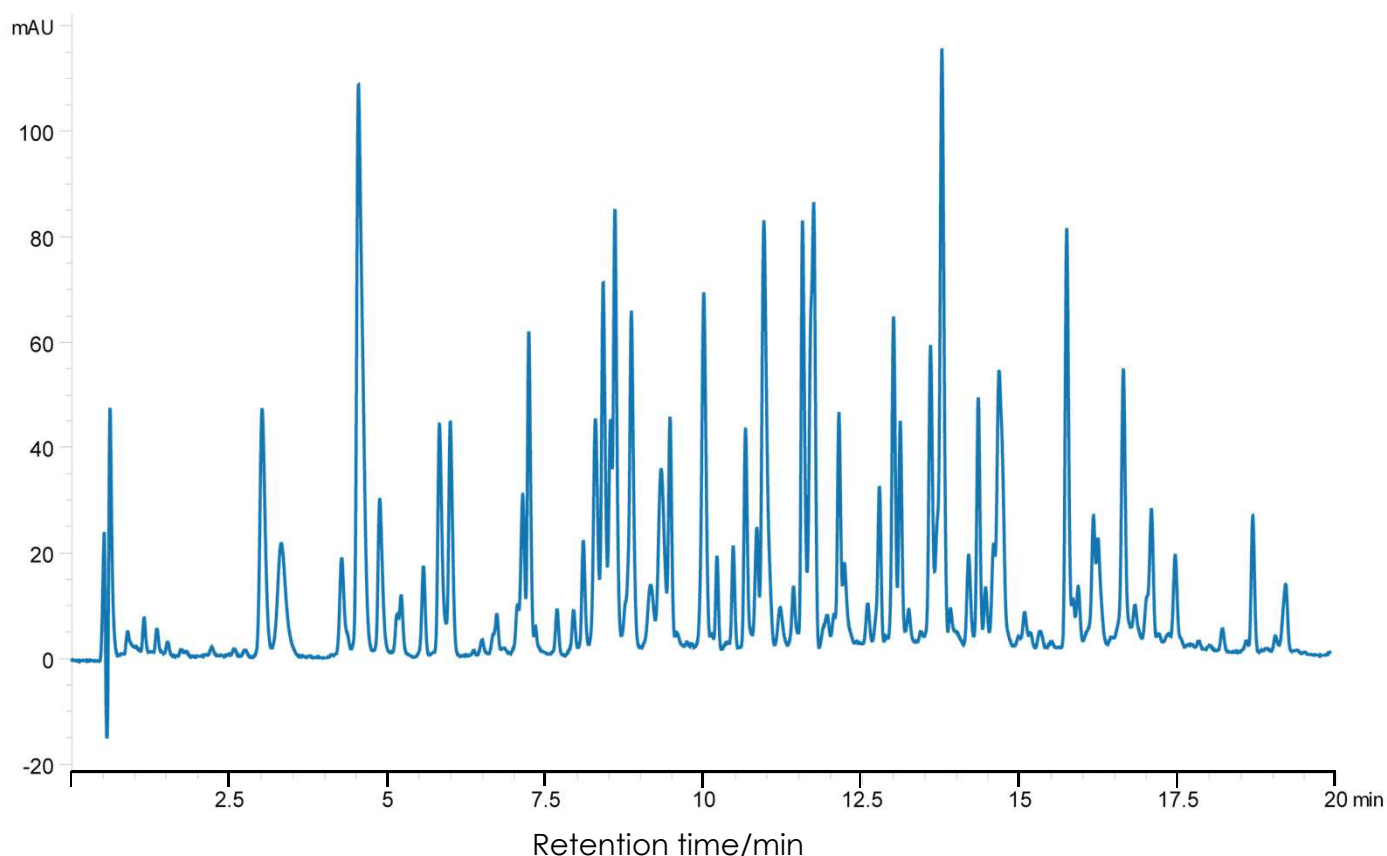


## BSAの消化物の分離

SunShell C18-16 2.6  $\mu\text{m}$ , 100 x 2.1 mm i.d.

## BSA Digest using SunShell C18-16



Column: SunShell C18-16 2.6  $\mu\text{m}$  (16 nm), 100 x 2.1 mm

Mobile phase: A) 0.1% TFA in water

B) 0.1% TFA in acetonitrile

Gradient program:

Time(min)	0	1	21
%B	10	10	40

Flow rate: 0.50 mL/min

Temperature: 40 °C

Detection: UV@214 nm

Injection volume: 10  $\mu\text{L}$

Concentration: 0.01  $\mu\text{g}/\mu\text{L}$

Sample:

1. Bovine Serum Albumin Digest