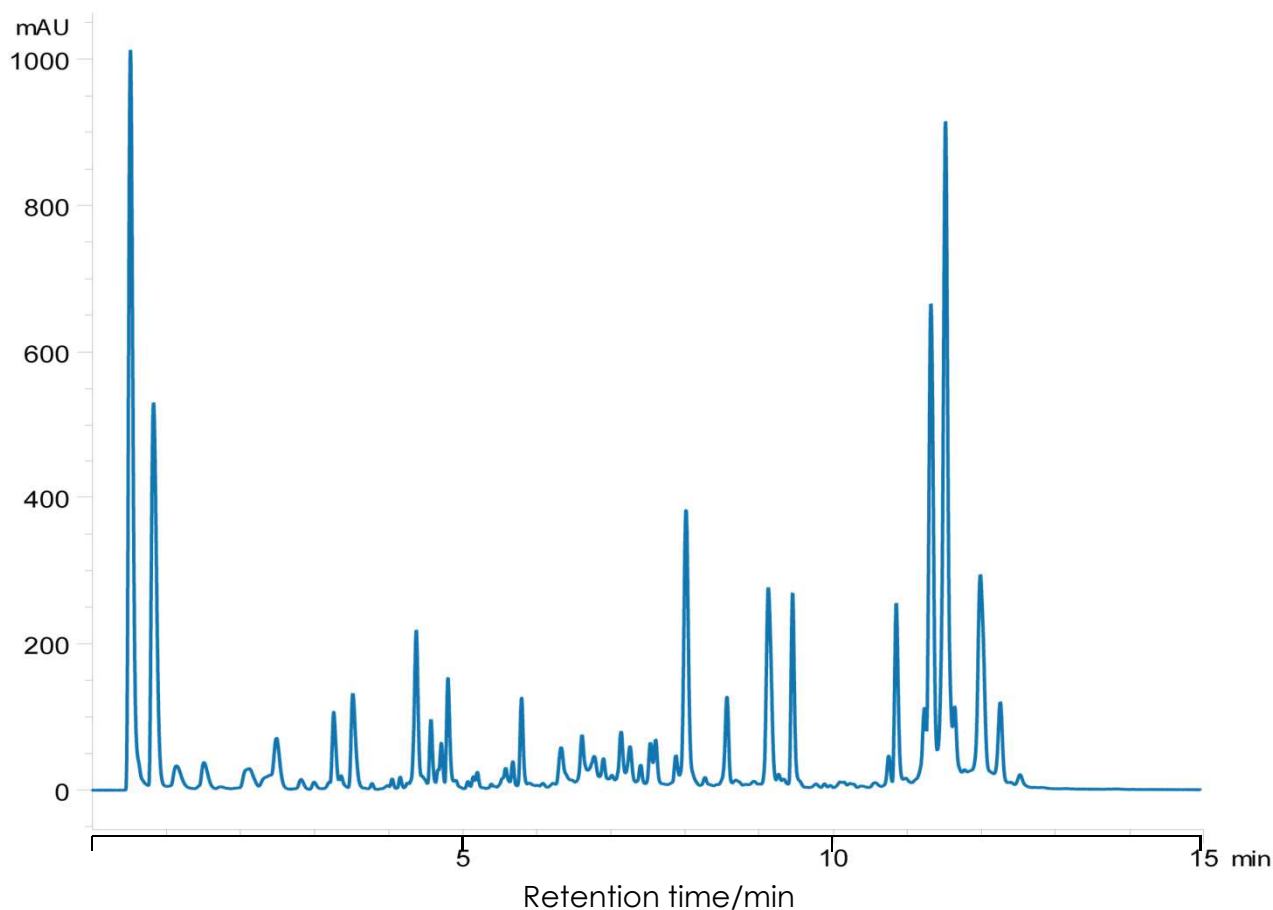


アルファカゼイン消化物の分離

SunShell C18-16 2.6 μm , 100 x 2.1 mm i.d.

Alpha Casein Digest using SunShell C18-16



Column: SunShell C18-16 2.6 μm (16 nm), 100 x 2.1 mm

Mobile phase: A) 0.1% TFA in water

B) 0.1% TFA in acetonitrile

Gradient program:

| Time(min) | 0 | 10 | 14 |
|-----------|----|------|------|
| %B | 10 | 36.4 | 36.4 |

Flow rate: 0.50 mL/min

Temperature: 40 °C

Detection: UV@214 nm

Injection volume: 10 μL

Sample:

1. Alpha Casein Digest