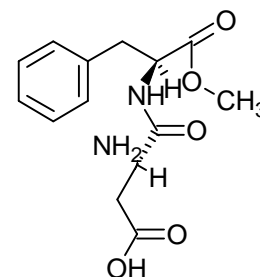
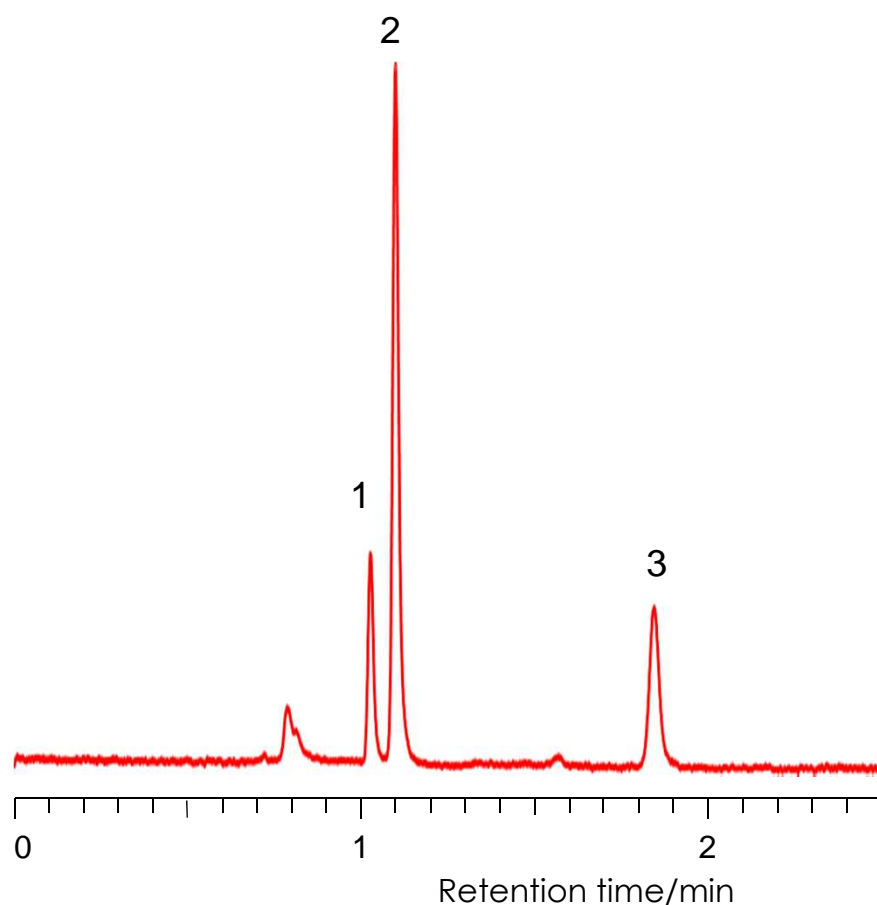


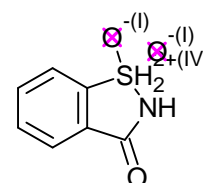
合成甘味料の分離

Artificial sweeteners

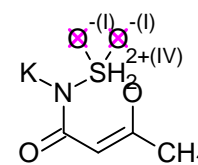
SunShell HILIC-Amide 2.6 μ m, 100 x 4.6 mm i.d.



1. Aspartame



2. Saccharin



3. Acesulfame K

Column:

SunShell HILIC-Amide 2.6 μ m, 100 x 4.6 mm,

Mobile phase: acetonitrile: 25 mM phosphate buffer (pH2.5) =8:2

Flow rate: 1.0 mL/min ,

Temperature: Ambient

Detection: UV@215 nm

Sample: 1 = Aspartame, 2 = Saccharin, 3 = Acesulfame K