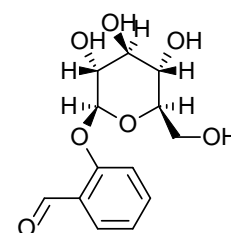
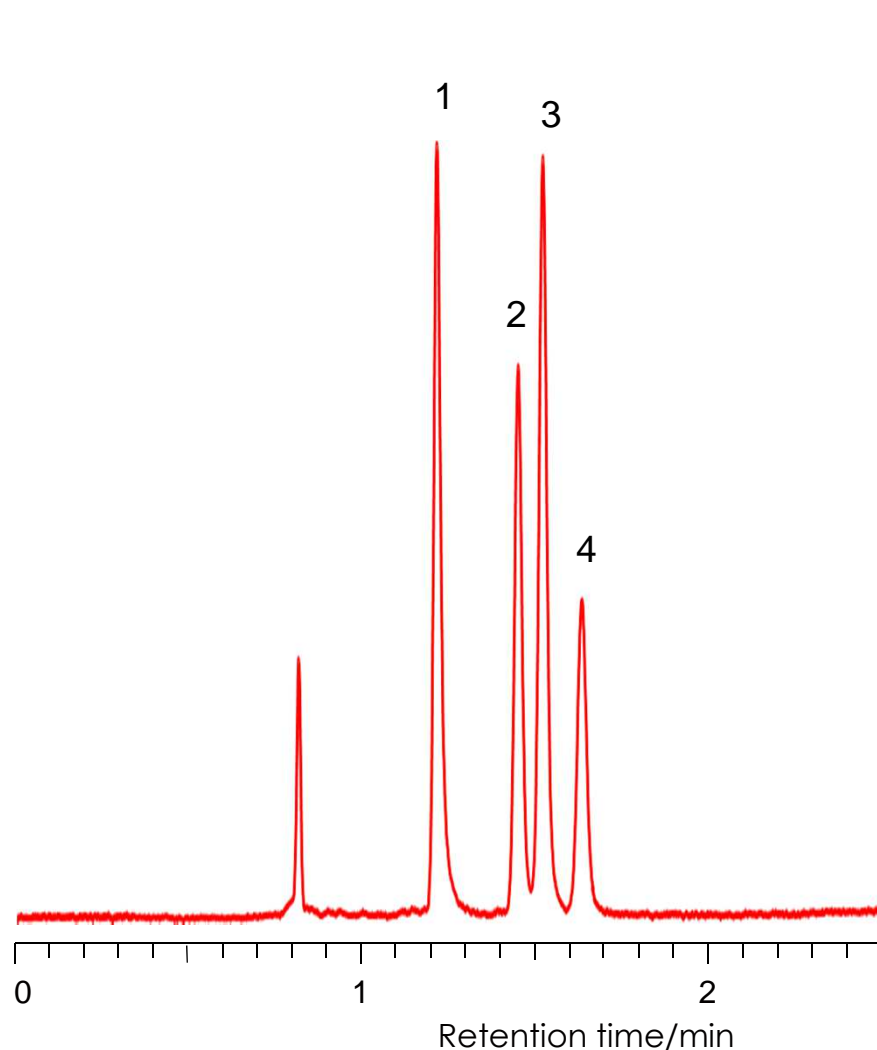


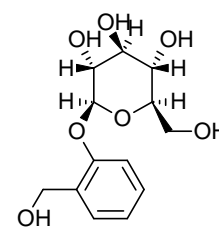
配糖体の分離

Glycoside

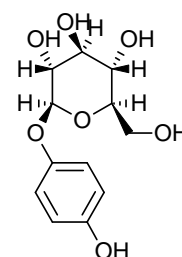
SunShell HILIC-Amide 2.6 μ m, 100 x 4.6 mm i.d.



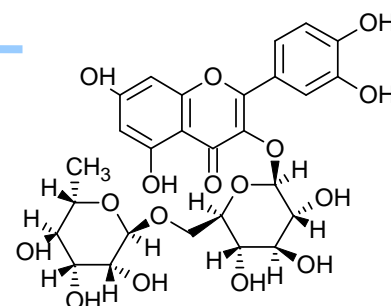
1. Helicin



2. Salitin



3. Arbutin



4. Rutin

Column: SunShell HILIC-Amide 2.6 μ m, 100 x 4.6 mm

Mobile phase:

Acetonitrile:25 mM phosphate Ammonium (pH4.9) =8:2

Flow rate: 1.0 mL/min

Temperature: Ambient

Detection: UV@215 nm

Sample: 1 = Helicin, 2 = Salicin, 3 = Arbutin, 4 = Rutin