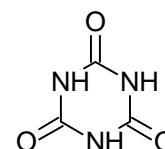
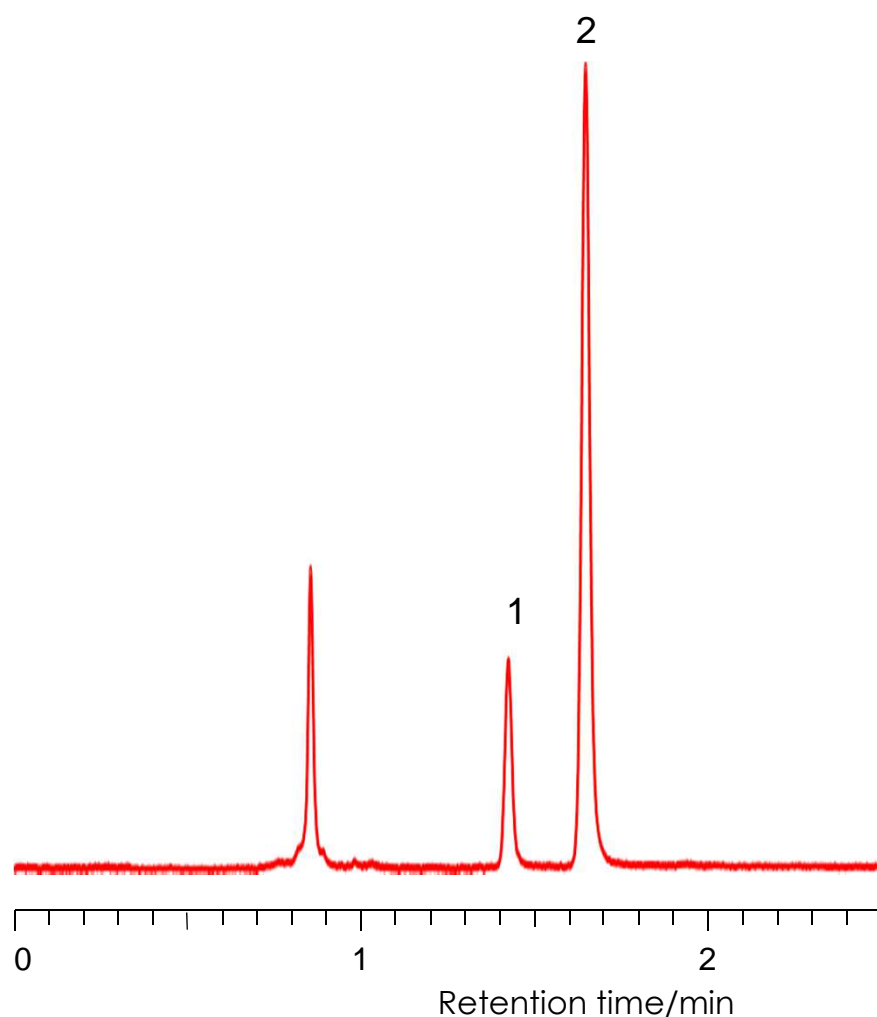


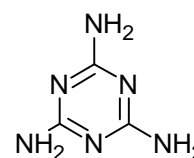
メラミンとシアヌル酸の分離

Melamine and cyanuric acid

SunShell HILIC-Amide 2.6 μ m, 100 x 4.6 mm i.d.



1. Cyanuric acid



2. Melamine

Column: SunShell HILIC-Amide 2.6 μ m, 100 x 4.6 mm
Mobile phase: acetonitrile:5 mM phosphate Buffer (pH6.9) =75:25
Flow rate: 1.0 mL/min
Temperature: 40 $^{\circ}$ C
Detection: UV@220 nm,
Sample: 1 = Cyanuric acid, 2 = Melamine