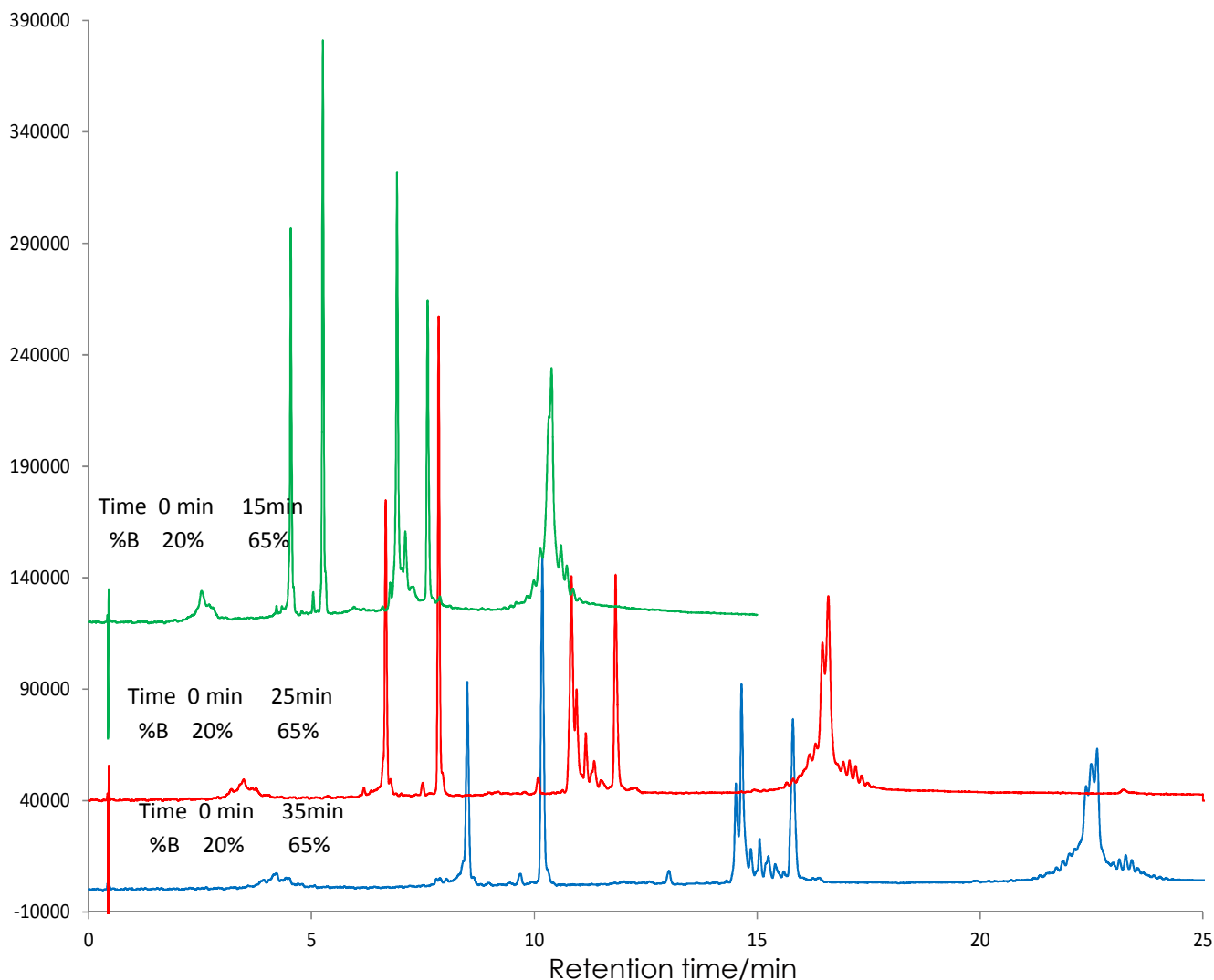


## タンパク質のグラジエン時間による分離比較

### Proteins Effect of gradient time

SunShell C8-30 2.6  $\mu$ m, 100 x 2.1 mm i.d.



#### Column:

SunShell C8-30 2.6  $\mu$ m (30 nm), 100 x 2.1 mm

Mobile phase: A) 0.1% TFA in water

B) 0.08 % TFA in acetonitrile

Gradient program: Time 0 min 15 , 25, 35min

%B 20% 65%

Flow rate: 0.5 mL/min

Temperature: 80 °C

Detection: UV@215 nm

Sample: 1 = Cytochrome C, 2 = Lysozyme, 3 = BSA, 4 = Myoglobin, 5 = Ovalbumin