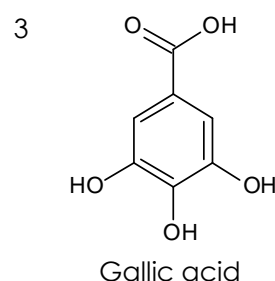
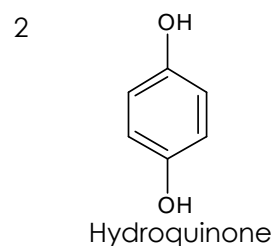
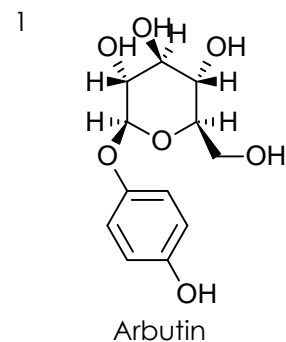
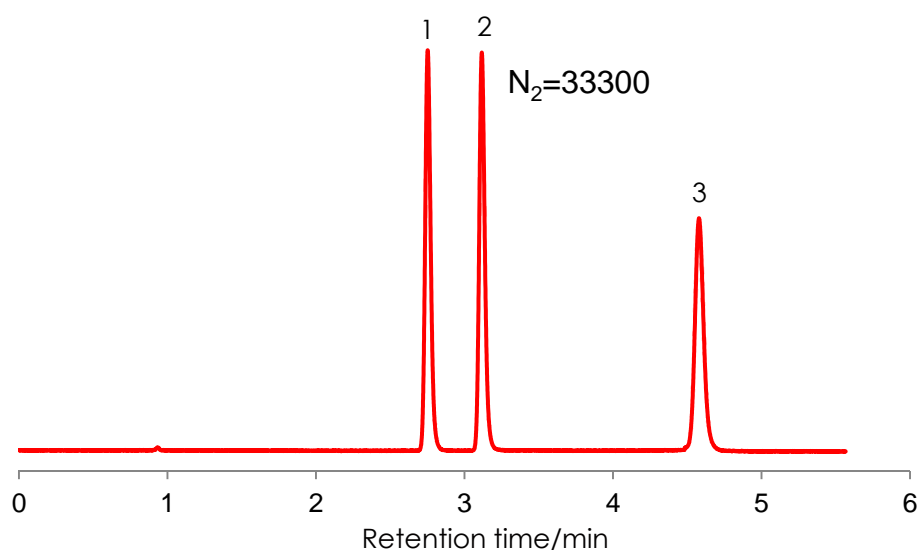


アルブチンとその関連物質の分離

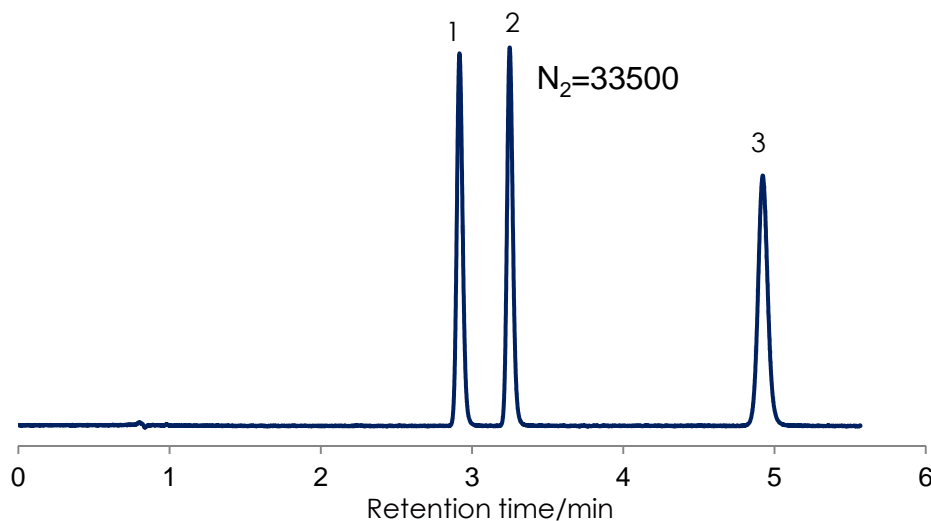
Arbutin and related substances

SunShell RP-AQUA 2.6 μ m,
150 x 4.6 mm i.d.

10 mM formic acid/ methanol = 97/3



10 mM phosphoric acid/methanol = 97/3



Column: SunShell RP-AQUA 2.6 μ m, 150 x 4.6 mm
Mobile phase: 10 mM formic acid/ methanol = 97/3 or
10 mM phosphoric acid/methanol = 97/3
Flow rate: 1.5 mL/min
Temperature: Ambient
Detection: UV@280 nm
Sample: 1 = Arbutin, 2 = Hydroquinone, 3 = Gallic acid