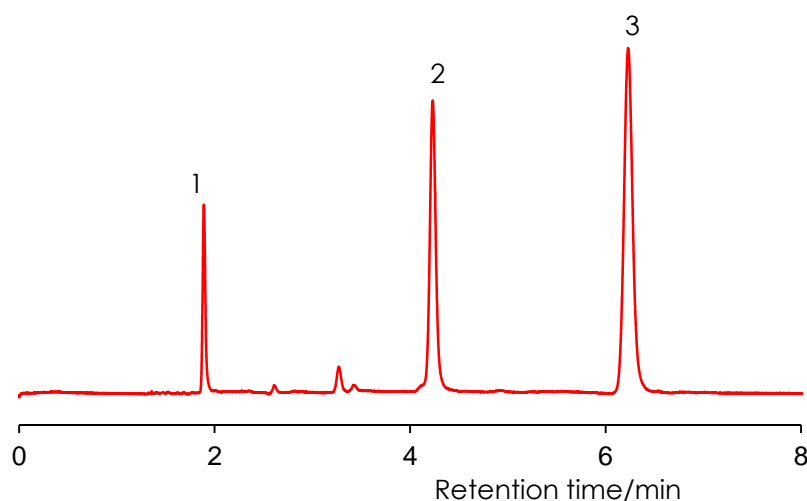


アントラキノン系染料の分離 (1)

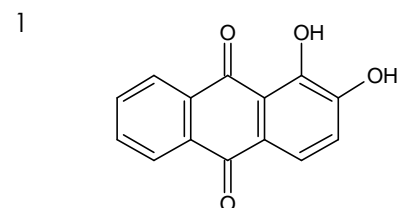
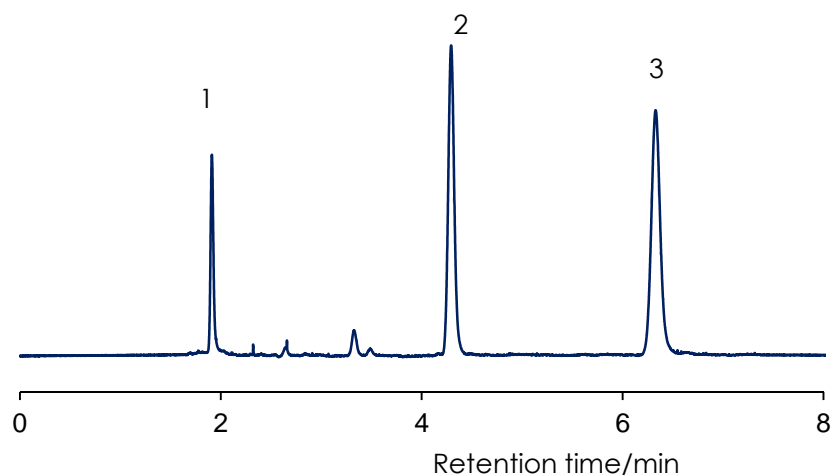
Anthraquinone dye (1)

SunShell C18 2.6 μ m, 100 x 4.6 mm i.d.

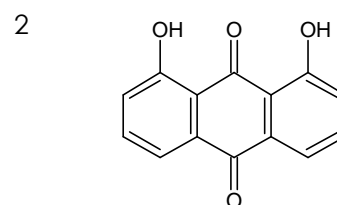
Methanol:20mM phosphate buffer pH2.5=75:25



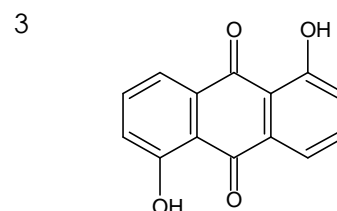
Methanol:0.1% formic acid=75:25



Alizarin



Chrysazin



Anthrarufin

Column: SunShell C18 2.6 μ m, 100 x 4.6 mm

Mobile phase:

A) Methanol:20mM phosphate buffer pH2.5=75:25

B) Methanol:0.1% formic acid=75:25

Flow rate: 1.0 mL / min

Temperature: 40 $^{\circ}$ C

Detection: UV@250 nm

Sample: 1 = Alizarin, 2 = Chrysazin, 3 = Anthrarufin