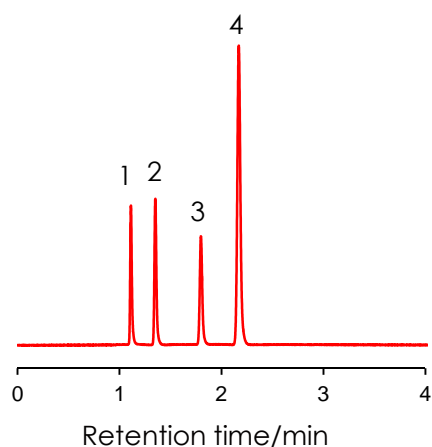


内分泌攪乱物質の分離 (1)

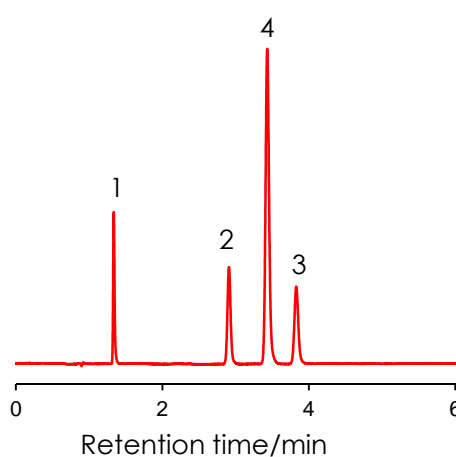
Endocrine disruptors (1)

SunShell C18 2.6 μ m, 100 x 4.6 mm i.d.

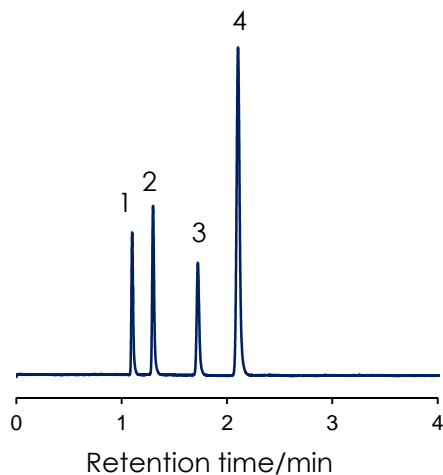
Acetonitrile:water:formic acid=60:40:0.04



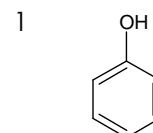
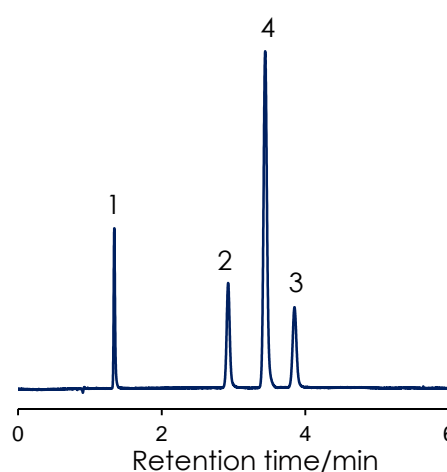
Methanol:water:formic acid=60:40:0.04



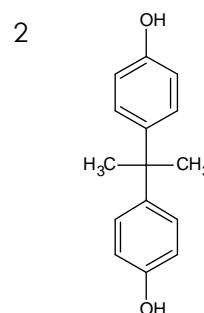
Acetonitrile:20mM Potassium phosphate buffer (pH3.0)=60:40



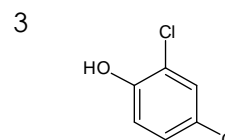
Methanol:20mM Potassium phosphate buffer (pH3.0)=60:40



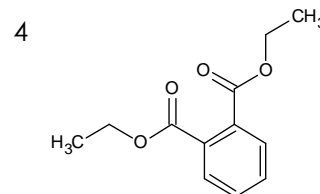
Phenol



Bisphenol-A



2,4-Dichlorophenol



Diethylphthalate

Column: SunShell C18 2.6 μ m, 100 x 4.6 mm

Mobile phase:

A) Acetonitrile:water:formic acid=60:40:0.04

B) Acetonitrile:20mM Potassium phosphate buffer (pH3.0)=60:40

C) Methanol:water:formic acid=60:40:0.04

D) Methanol:20mM Potassium phosphate buffer (pH3.0)=60:40

Flow rate: 1.0 mL/min

Temperature: 40 $^{\circ}$ C

Detection: UV@280 nm

Sample: 1 = Phenol, 2 = Bisphenol-A, 3 = 2,4-Dichlorophenol, 4 = Diethylphthalate