

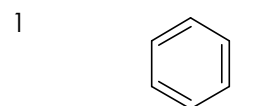
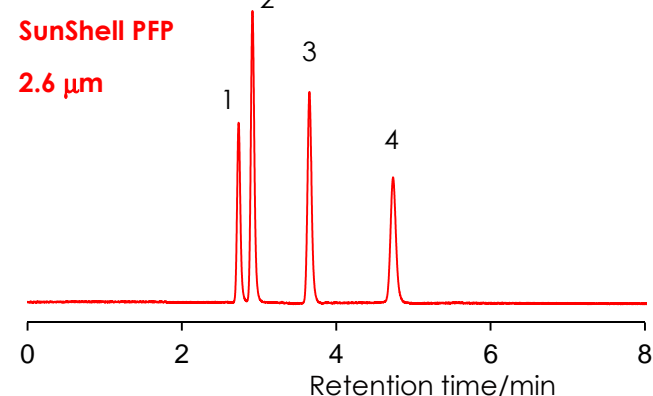
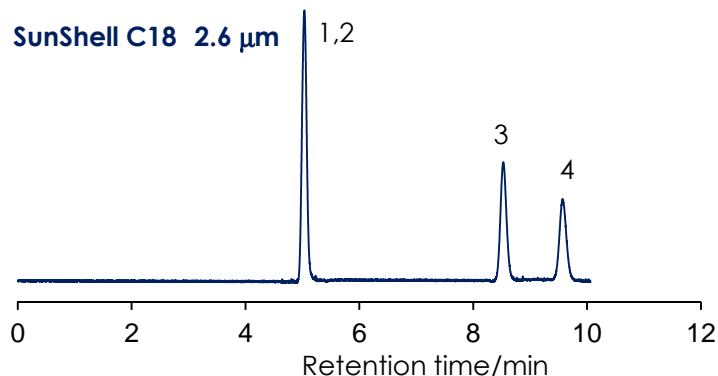
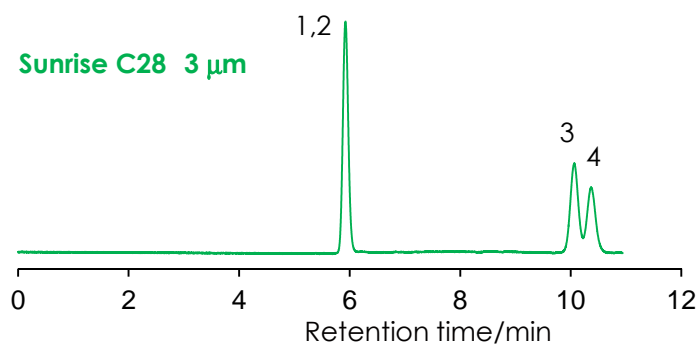
## フルオロベンゼンとベンゼンの分離

### Fluorobenzene and benzene

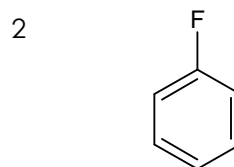
Sunrise C28 3  $\mu\text{m}$ , 150 x 4.6 mm i.d.

SunShell C18 2.6  $\mu\text{m}$ , 150 x 4.6 mm i.d.

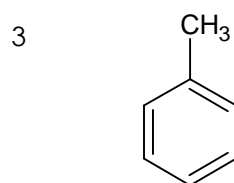
SunShell PFP 2.6  $\mu\text{m}$ , 150 x 4.6 mm i.d.



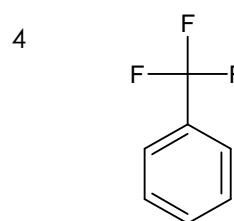
Benzene



Fluorobenzene



Toluene



a,a,a-Trifluorotoluene

Column: Sunrise C28 3  $\mu\text{m}$ , 150 x 4.6 mm

SunShell C18 2.6  $\mu\text{m}$ , 150 x 4.6 mm

SunShell PFP 2.6  $\mu\text{m}$ , 150 x 4.6 mm

Mobile phase: Methanol:water=60:40

Flow rate: 1.0 mL / min

Temperature: 40 °C

Detection: UV@250 nm

Sample: 1 = Benzene, 2 = Fluorobenzene, 3 = Toluene, 4 = a,a,a-Trifluorotoluene