

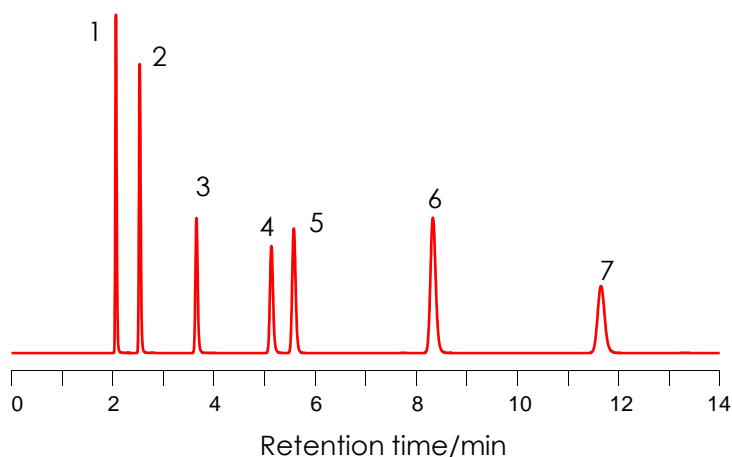
## 核酸の分離

### Nucleic acid

SunShell RP-AQUA 2.6  $\mu$ m, 150 x 4.6 mm i.d.

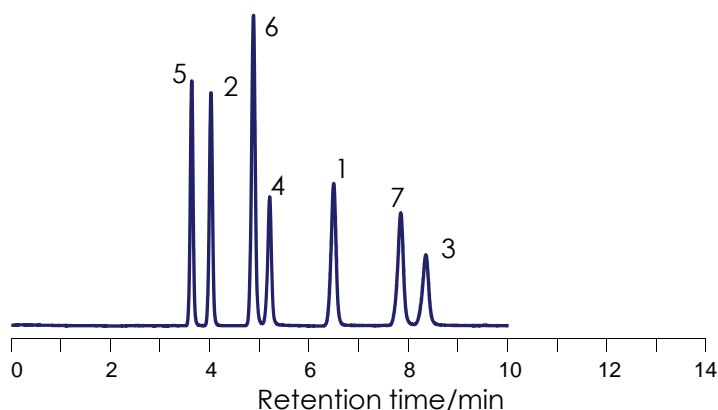
SunShell HILIC-Amide 2.6  $\mu$ m, 150 x 4.6 mm i.d.

Column: SunShell RP-AQUA, 2.6  $\mu$ m 150 x 4.6 mm

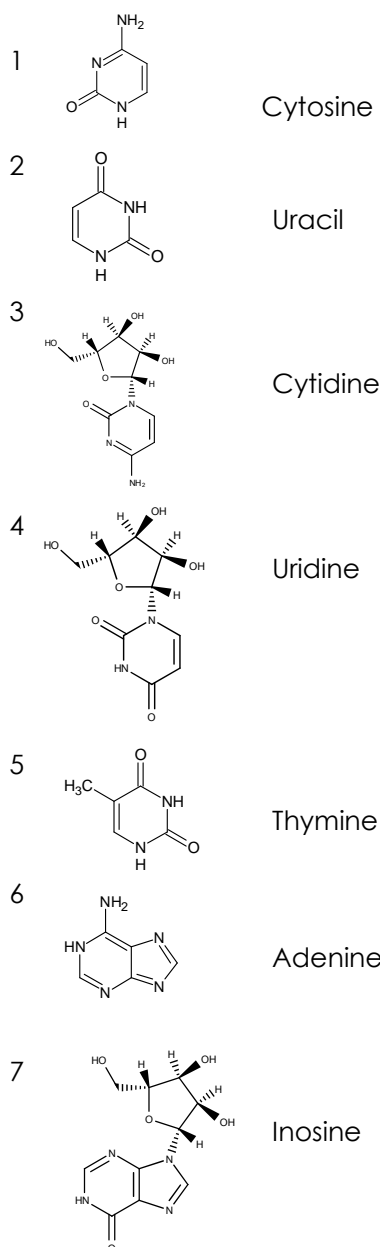


Mobile phase:  
**20 mM ammonium acetate pH6.8**  
Flow rate: 1.0 mL / min  
Temperature: 40 °C  
Pressure: 23.8 MPa  
Detection: UV@250 nm

Column: SunShell HILIC-Amide, 2.6  $\mu$ m, 150 x 4.6 mm



Mobile phase:  
**Acetonitrile:20 mM ammonium acetate pH6.8 = 80:20**  
Flow rate: 0.5mL / min  
Temperature: 40 °C  
Pressure: 6.1 MPa  
Detection: UV@250 nm



Instrument	
Hitachi Chromaster®	
Detector:	5410
Oven:	5310
AutoSampler:	5260
Pump:	5160

