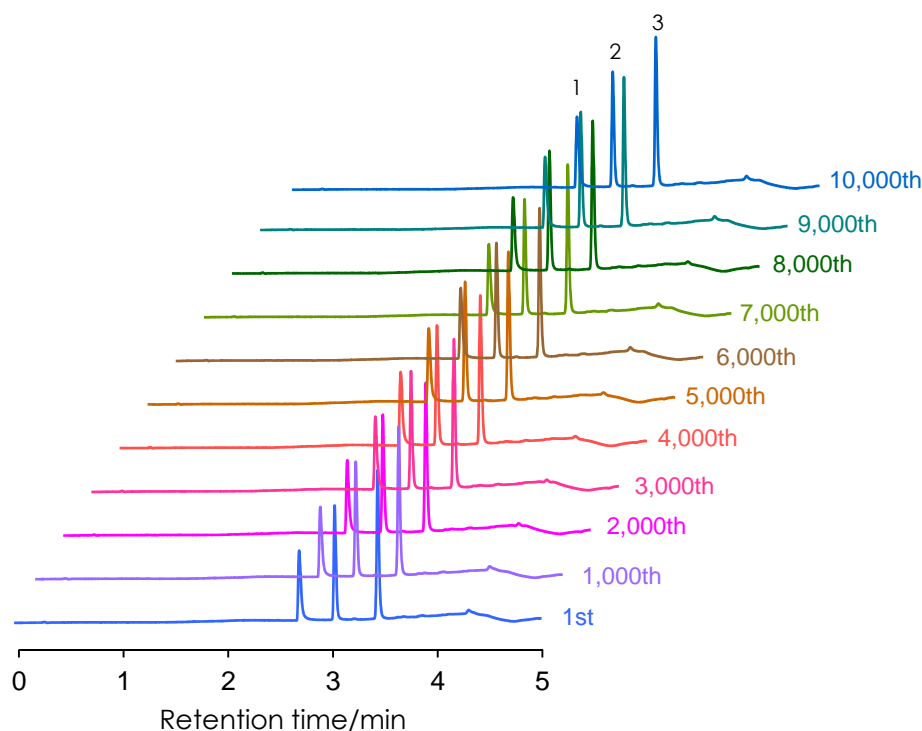


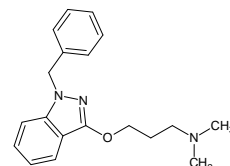
酸性条件(pH2)下の連続分析

SunShell C18 2.6 μm, 50 x 2.1 mm i.d.

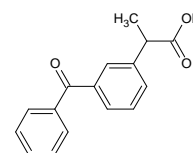
Continuous analysis under acidic pH condition



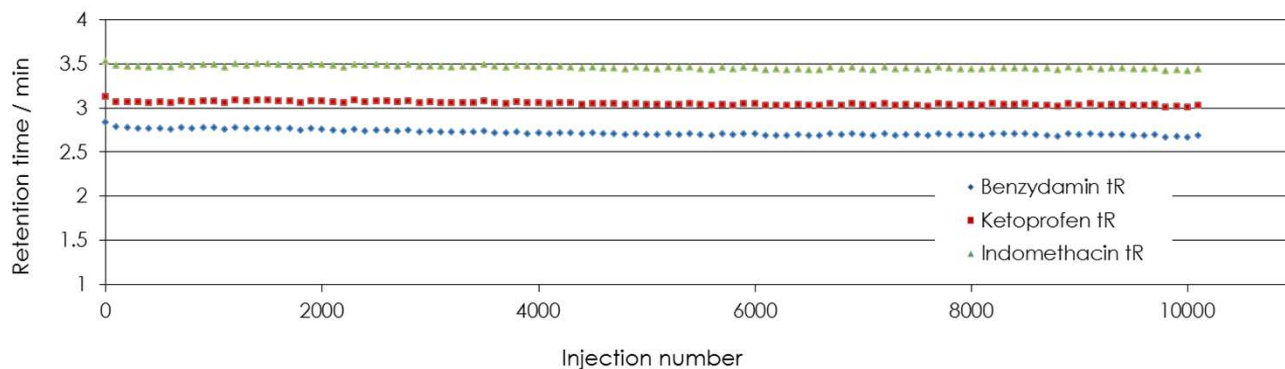
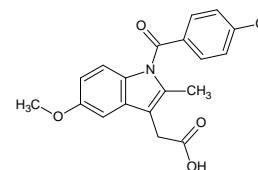
1. Benzydamine



2. Ketoprofen



3. Indomethacin



Column: SunShell C18 2.6 μm, 50 x 2.1 mm
Mobile phase: A) 0.1% trifluoroacetic acid pH 2.0
B) Acetonitrile

Gradient program:

Time (min)	0	3	3.1	5
% B	10	90	10	10

Flow rate: 0.5 mL/min

Temperature: 40 °C

Back pressure: 11 MPa to 17 MPa

Detection: UV@270nm

Injection volume: 0.5 μL

Sample: 1=Benzydamine (0.5 mg/mL), 2=Ketoprofen (0.04 mg/mL),
3= Indomethacin (0.05 mg/mL)

Instrument

Hitachi Chromaster®

Detector: 5410

Oven: 5310

AutoSampler: 5260

Pump: 5160

