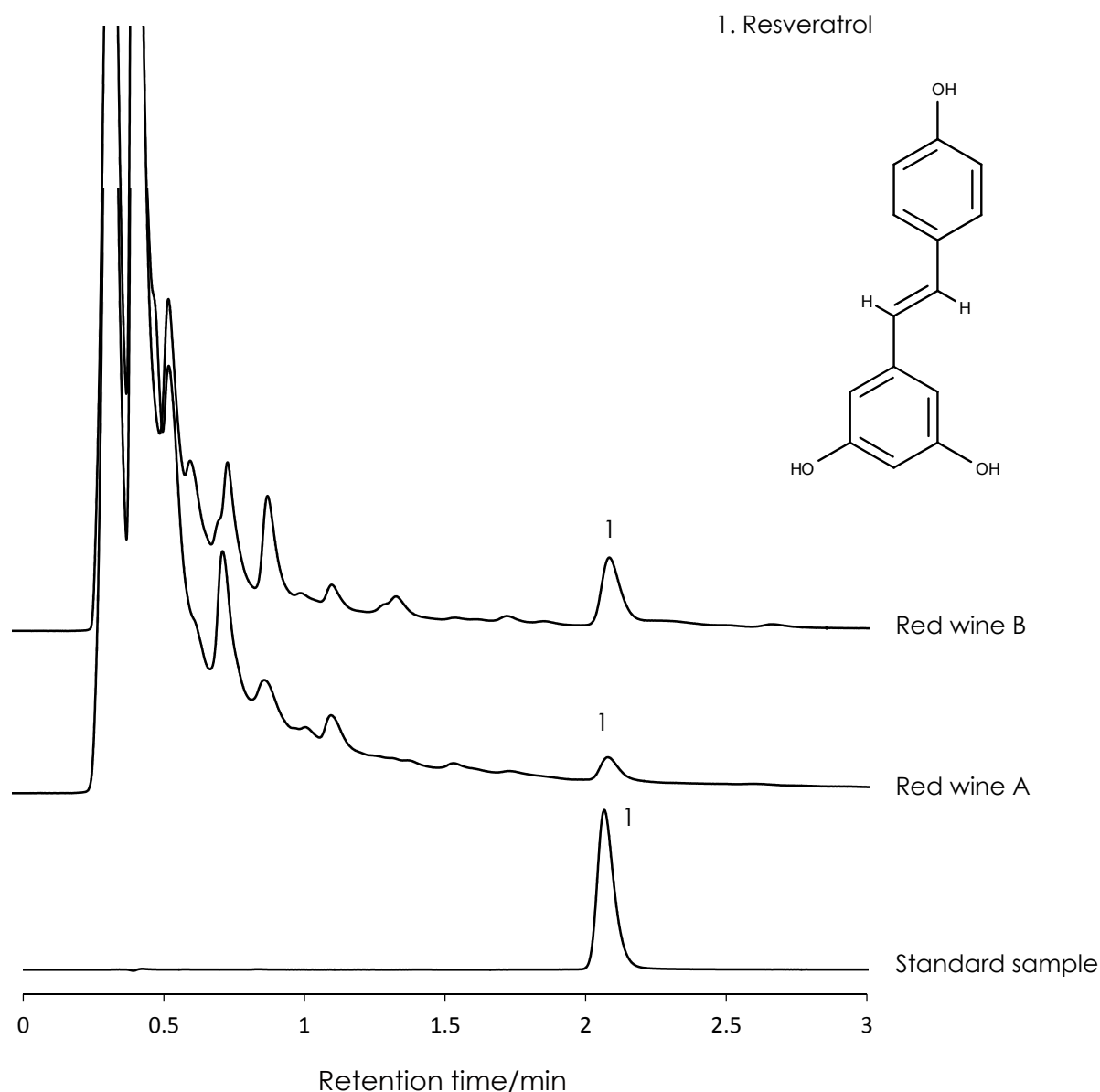


赤ワイン中ポリフェノール(レスベラトロール)の分離

Resveratrol

SunShell C18 2.6 μ m, 50 x 2.1 mm i.d.



Column: SunShell C18 2.6 μ m, 50 x 2.1 mm i.d.

Mobile phase: Acetonitrile:Water = 20:80

Flow rate: 0.3 mL/min

Temperature: 40 $^{\circ}$ C

Detection: UV@310nm

Sample: 1= Resveratrol

Instrument

Hitachi Chromaster[®]

Detector: 5410

Oven: 5310

AutoSampler: 5260

Pump: 5160

