

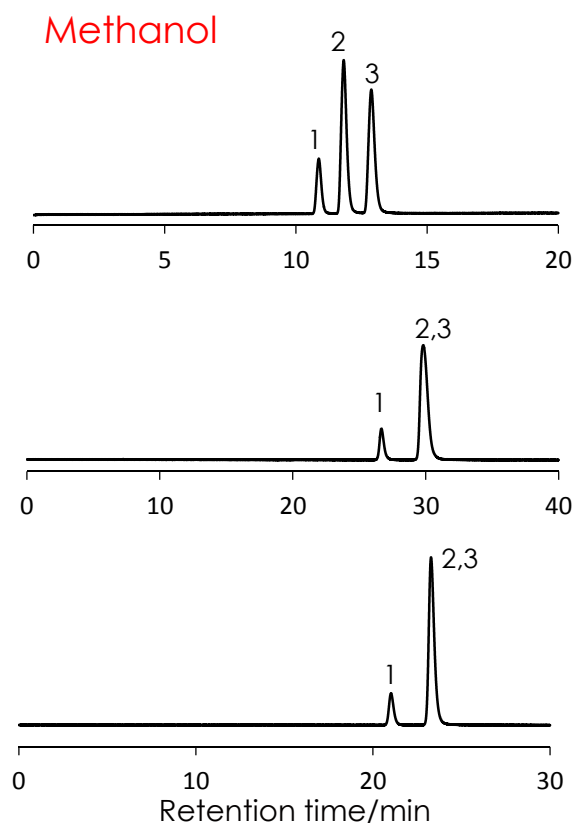
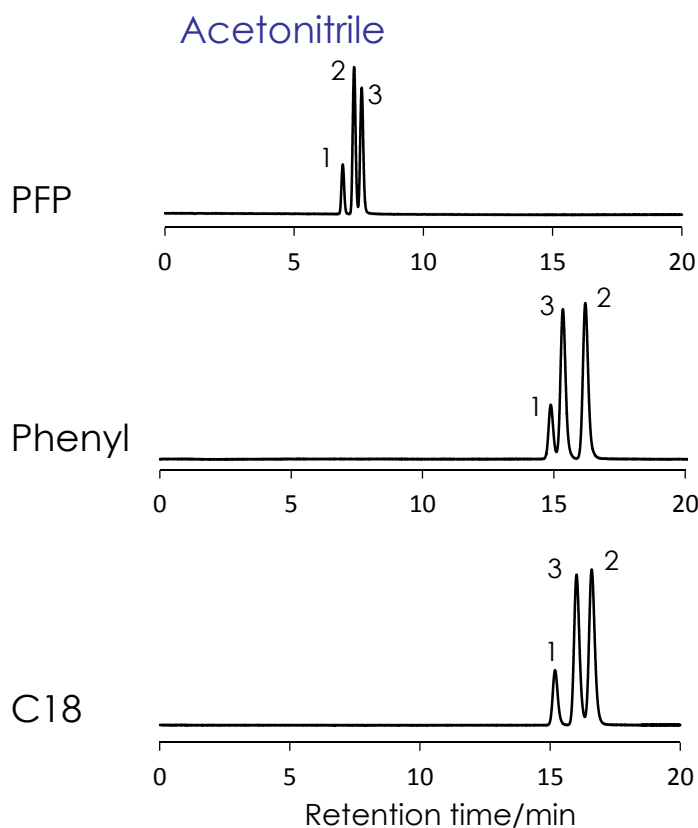
## o, m, p-トルイジンの分離

### o, m, p-Toluidine

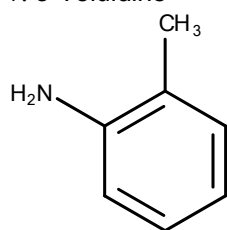
SunShell PFP 2.6 μm, 150 x 4.6 mm i.d.

SunShell Phenyl 2.6 μm, 150 x 4.6 mm i.d.

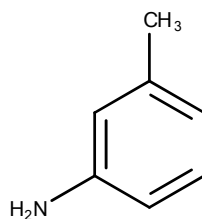
SunShell C18 2.6 μm, 150 x 4.6 mm i.d.



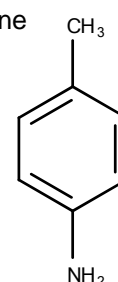
1. o-Toluidine



2. m-Toluidine



3. p-Toluidine



Mobile phase:

Methanol:10 mM Ammonium acetate (pH 6.8) = 10:90

Acetonitrile:10 mM Ammonium acetate (pH 6.8) = 10:90

Flow rate: 1.5 mL/min

Temperature: 25 °C

Detection: UV@250nm

Sample: 1= o-Toluidine, 2 = p-Toluidine, 3 = m-Toluidine

Instrument

Hitachi Chromaster®

Detector: 5410

Oven: 5310

AutoSampler: 5260

Pump: 5160

