

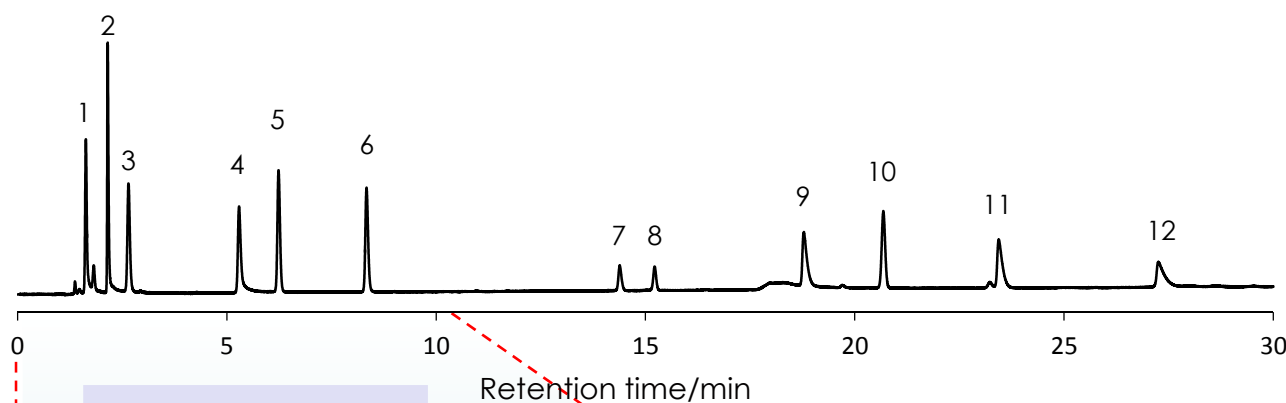
## タール色素の分離

### Tar pigment

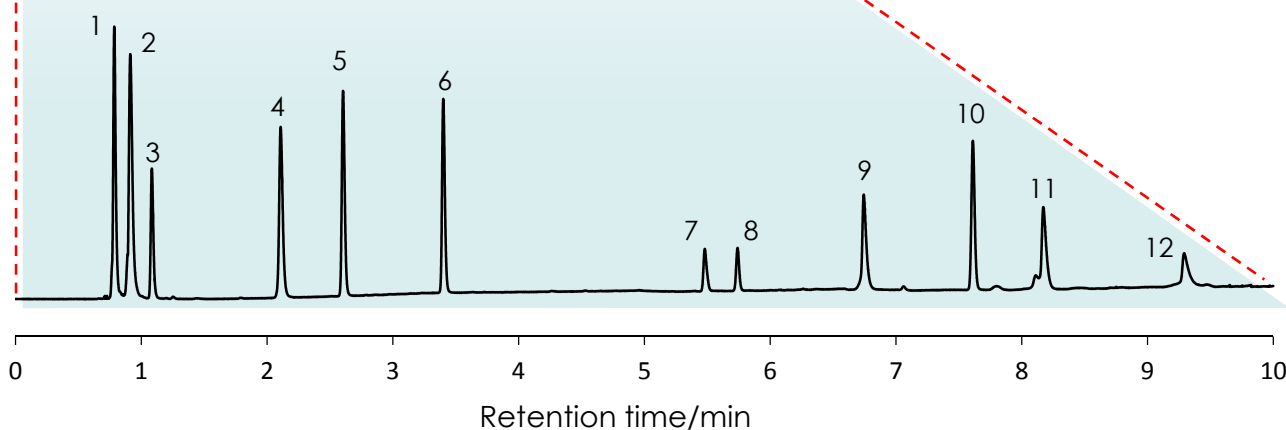
SunShell C18 2.6  $\mu$ m, 150 x 4.6 mm i.d.

Sunniest C18 5  $\mu$ m, 150 x 4.6 mm i.d.

Sunniest C18 5  $\mu$ m, 150 x 4.6 mm i.d.



SunShell C18 2.6  $\mu$ m, 100 x 4.6 mm i.d.



Column: SunShell C18 2.6  $\mu$ m, 150 x 4.6 mm i.d.

Mobile phase: A) 10 mM Ammonium acetate (pH 6.8)

B) Acetonitrile

Gradient program:

Time (min)	0	10
% B	10	50

Flow rate: 1.0 mL/min

Temperature: 40 °C

Detection: UV@250nm

Sample: 1= Tartrazine, 2 = Amaranth, 3 = Indigo carmine,

4 = New Coccine, 5 = Sunset Yellow FCF, 6 = Allura Red AC, 7 = Fast Green FCF,

8 = Brilliant Blue FCF, 9 = Erythrosine B, 10 = Furoxan, 11 = Acid Red 52, 12 = Rose bengal

Instrument

Hitachi Chromaster®

Detector: 5410

Oven: 5310

AutoSampler: 5260

Pump: 5160

