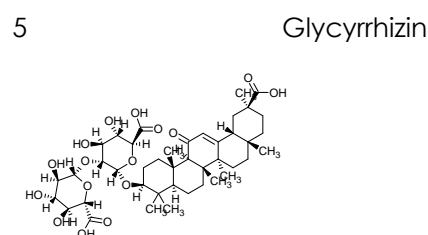
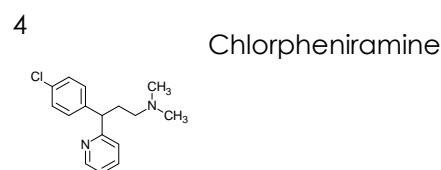
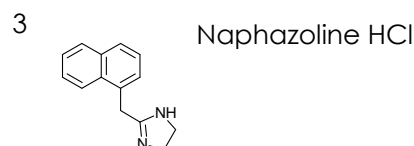
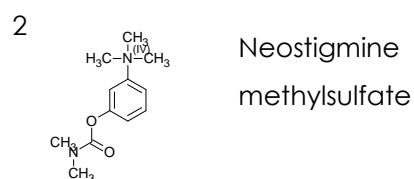
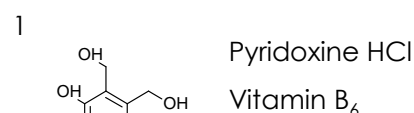
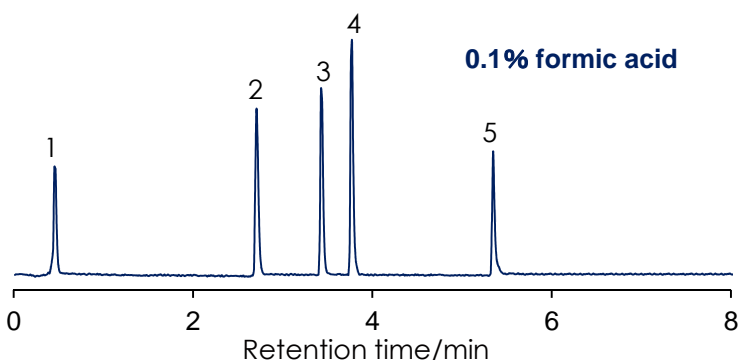
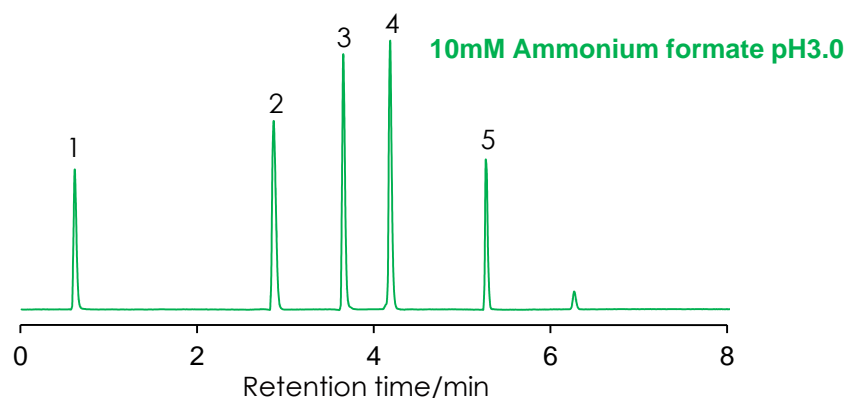
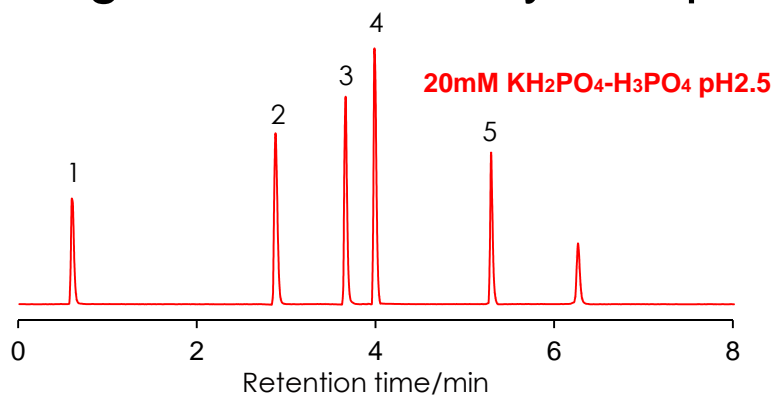


点眼剂成分

Ingredients in an eye drop

SunShell C18 2.6 μ m, 50 x 2.1 mm i.d.



Column: SunShell C18 2.6 μ m, 50 x 2.1 mm

Mobile phase: A) 20mM $\text{KH}_2\text{PO}_4\text{-H}_3\text{PO}_4$ pH2.5, 10mM Ammonium formate pH3.0
or 0.1% formic acid

B) Acetonitrile

Time (min)	0	5	7.5
%B	0	60	60

Flow rate: 0.4 mL/min

Temperature: 37 °C

Detection: UV@265 nm